



**BLASTONE**  
SUPERIOR PERFORMANCE



# RENTAL CATALOGUE

## AUSTRALIA | 2024

---

BLASTING AND PAINTING EQUIPMENT  
INSPECTION INSTRUMENTS  
BLASTING ACCESSORIES



# SIX REASONS TO HIRE YOUR BLAST AND COAT FLEET

## **TURNOUT MORE WORK**

Get the most modern corrosion control technologies without any additional capital investment.

Lower operating costs, improve environmental compliance and quality – hire from BlastOne.

## **NO EQUIPMENT LYING IDLE**

Only have occasional use for a specialised piece of dust collection or vacuum blast equipment? Don't tie capital up with these occasional use items - hire them from BlastOne.

By only keeping in your fleet those items of equipment in constant use, you avoid having your capital tied up.

This includes both mainstream and specialised equipment. If your regular workload requires 3 blast pots full time, don't have a 4th pot that is only used in periods of peak demand - hire it from BlastOne.

## **EXPAND YOUR CAPABILITES**

Would you like to be able to offer your customers a greater range of services than your current fleet allows? By utilising BlastOne's fleet, you can expand the range of services you can offer your customer without having to make an upfront investment.

## **EQUIPMENT WITHOUT CAPEX**

Having difficulty getting approval for capital expenditure from the finance department? You're not alone - this has become commonplace since the GFC. By hiring from BlastOne you can get the equipment you need without having to request Capex.

## **ELIMINATE DOWNTIME**

Each and every piece of BlastOne hire equipment is dispatched with a performance guarantee that it will operate according to the

specified production rate. As they are returned, they are assessed for performance and any rebuild or repair required will be carried out.

This eliminates the need for you to carry out repairs on the equipment you are using. For long-term and high value items a periodic in-field maintenance program can be negotiated.

## **UPGRADE YOUR FLEET**

Is your workload building up faster than you can keep up? In many instances, an increasing backlog of work is caused by a lack of equipment.

Increase your fleet of equipment without a long term commitment – hire from BlastOne.

# BLASTONE HIRE

## EVERYTHING YOU NEED FROM START TO FINISH IN ONE COMPLETE PACKAGE

### BLASTING AND PAINTING ENCLOSURE

The 'heart' of any containment system is the enclosure itself, which consists of two major elements-the sheeting and the support structure.

### CONTAINMENT SHEETING

BlastOne has an extensive range of containment sheeting available. This extensive range ensures that whatever your operating requirements are they can be met. Sheeting options include:

- a selection of different sheet widths and lengths.
- economical, light duty sheeting.
- heavy duty, long-term sheeting.
- flame-retardant sheeting.

### SUPPORT STRUCTURE

The most commonly used support structure for containment sheeting is stationary steel scaffolding. BlastOne does not supply scaffolding, however we can provide referrals for contractors who are experienced in setting up scaffolding structures for containment enclosures.

### VENTILATION AND DUST COLLECTION

An abrasive blasting enclosure without ventilation quickly becomes a dusty, hazardous fog, hindering productivity and safety. To counter this problem, BlastOne

has an extensive range of dust collection solutions to complete any containment system.

### HAZARDOUS WASTE MANAGEMENT

In some instances the coating requiring removal may contain hazardous substances, in the majority of cases this will be lead-based pigments. As these substances are considered toxic, specialised systems will be required. BlastOne can help you with waste disposal, testing and monitoring systems, and specialised PPE Systems.

### VACUUM RECOVERY

Sweeping and shoveling spent abrasive inside a containment enclosure can be a very time-consuming process. To help speed up spent abrasive recovery, BlastOne has available for purchase or hire industrial vacuum systems that are built specifically for recovering abrasive.

A range of different options are available including electric and pneumatic systems. Ask us for our specialised brochure on vacuum recovery systems.

### ABRASIVE RECYCLING

Where an abrasive is being used that has good recycling characteristics, such as GMA Australian Garnet, BlastOne can

supply recycling systems clean spent abrasive.

These systems can clean up to 7 tonnes of abrasive per hour, removing both coarse trash and dust creating abrasive fines. Easy to use and low cost to run, BlastOne abrasive recycling systems are suitable for both fixed and site installations.

### DEHUMIDIFICATION

Every contractor realises that a supply of clean, dry air is essential to the efficient operation of a blast machine, however, drying the air inside a blast enclosure also helps to improve productivity.

Traditionally used in cold, wet conditions, dehumidifiers have proved their worth in tropical conditions by minimising flash rusting. Talk to BlastOne for a range of hire or purchase solutions.

### ABRASIVE BLASTING MACHINERY

From lightweight hand-held units to trailer-mounted bulk blasters for up to four operators, BlastOne has a blast machine to suit your needs. In addition to the blast unit itself, BlastOne has an extensive range of specialised safety equipment for the corrosion control industry. BlastOne's entire range of corrosion control equipment is available for both sale and hire.

# JUST AS IMPORTANT AS CHOOSING THE RIGHT SYSTEM TO HIRE, IS SELECTING THE RIGHT ABRASIVE TO USE WITH YOUR HIRE PACKAGE

## THREE REASONS WHY CHOOSING GMA GARNET IS THE SMART CHOICE

### IT'S CLEANER

As proven by independent laboratory testing, GMA Premium SpeedBlast Garnet contains no shells, dirt, seaweed or other contaminants. This means that dust clouds are virtually eliminated during blasting. Plus its lower in soluble chlorides.

Unlike many other garnet abrasives, GMA Australian Garnet complies with ISO Standard 11126-10.

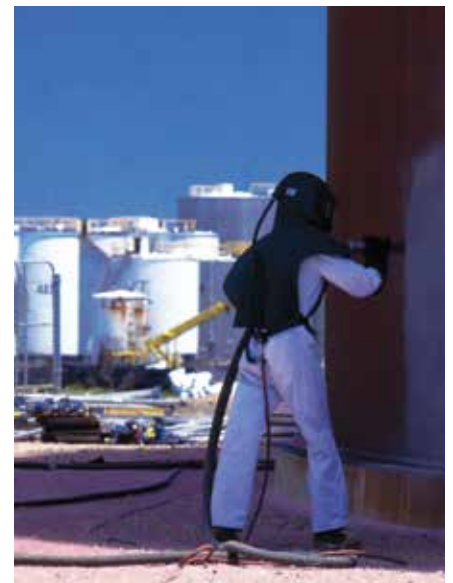
This is part of the international standard for the preparation of steel before painting and is the worldwide specification for garnet blast media. One of the most common causes of premature coating failure is chloride (salt) contamination of the substrate prior to painting. The ISO Standard specifies that the soluble chloride content is to be a maximum of 25 parts per million (ppm). GMA Premium SpeedBlast Garnet is guaranteed to contain less than 15ppm of soluble chlorides. Some other garnet abrasives have tested at up to 412ppm!



Conventional abrasives can create excess dust.

### IT'S FASTER

Premium quality GMA Garnet has been proven worldwide to be the right blend of grain sizes to maximise blasting speed. In fact, while imported garnet typically has 1.3 million grains per kilogram, GMA Premium SpeedBlast Garnet has nearly ten times that, with 11 million grains per kilogram.



Blasting with GMA is much more neighbourly.

### IT'S LEANER

Abrasive blasting relies on impact to remove unwanted material. More impacts = higher production. Imported garnet typically has less grain per kilogram than GMA Premium SpeedBlast Garnet, which means less impacts per kilogram. The end result is that you have to buy more material to do the same job. In addition, GMA's ISO compliance and guaranteed purity gives you better surface preparation every time.



# CONTENTS

- 07 BLAST MACHINES
- 15 AIR SUPPLY
- 18 SITE SYSTEMS
- 28 SPRAY SYSTEMS
- 31 UHP WATERJET EQUIPMENT
- 35 ROBOTICS
- 37 INSTRUMENTS



**BLAST ONE**  
SUPERIOR PERFORMANCE

# BLAST MACHINES

- 08 Blast Pots
- 09 MegaBlaster
- 09 Blast Accessories
- 10 VRS
- 10 BRS
- 11 M11 & M21 Soda Blaster
- 11 TrackBlast Units
- 11 Bristle Blaster
- 12 Jumbo RotorBlast
- 12 IntelliBlast NEO
- 13 Dustless Blasting
- 14 AmphiBlast



## SMALL PORTABLE BLAST POTS



OUTLETS	CAPACITY	DIMENSIONS (m)	WEIGHT	PART NUMBER
1 x MV	1.0 cu ft/70kg of garnet	0.47 x 0.47 x 0.84	70kg	HIBMS10
1 x MV	2.0 cu ft/140kg of garnet	0.47 x 0.47 x 1.6	90kg	HIBMS20

BlastOne small portable blast pots are ideal for small blasting applications such as touch-up and spot blasting. Their size and wheels make them highly manoeuvrable compared to the bigger heavy pots. The 2.0 cu ft pot is very similar to the 1.0 cu ft, (also known as the 'Mighty Mite'), however it holds twice the amount of garnet.

Minimum air supply of 150cfm/100psi is required to run this unit. Higher cfm rates will mean bigger nozzle use and much more effective and efficient blasting.

Base packages include Deadman handle, 20m of line, Lid & Screen.

## PORTABLE HIGH PRODUCTION BLAST POTS



OUTLETS	CAPACITY	DIMENSIONS (m)	WEIGHT	PART NUMBER
1 x TV or MV	3.5 cu ft/230kg of garnet	0.6 x 0.8 x 1.4	145kg	HIBMS35
1 x TV or MV	6.5 cu ft/430kg of garnet	0.9 x 0.8 x 1.55	225kg	HIBMS65

The BlastOne S-Series 3.5 & 6.5 blast pots are built for continuous high production use. Extra cost has gone into many details and additional features to increase production, save you money in maintenance and make your blasting job quicker and easier.

These pots are ideal units for any job requiring high production blasting. The large capacity of the 6.5 cu ft pot, means less down time refilling the hopper.

Minimum air supply of 150cfm/100psi is required to run these units. Higher cfm rates will mean bigger nozzles use and much more effective and efficient blasting.

Base package includes Deadman handle, 20m of line, lid and screen.

Options: Combo/Micro Valve, Thompson Valve, Pneumatic or Electric Deadman.

Enquire about our skid and trailer mounted combination packages. These are available in a range of sizes, giving blasters maximum effectiveness.







## DUAL OUTLET BLAST POT



OUTLETS	CAPACITY	DIMENSIONS (m)	WEIGHT	PART NUMBER
2 x Tera	11.7 cu ft/700kg of garnet	0.47 x 0.47 x 0.84	70kg	HIBMS1172TERA

The Schmidt 11.7 cuft. 2-outlet squat pot blast unit is specifically designed for multiple operators use, making it an excellent choice for blast room applications with 1-2 blasters. The 11.7 blast unit is the ideal choice for your commercial abrasive blasting operations.

Built for continuous high product use, the genuine Schmidt blast unit is manufactured to BlastOne specifications to increase production and save you money in maintenance making your blasting job quicker and easier.

## MEGABLASTER



CAPACITY	MOUNT	NO. OF OUTLETS	AIRPREP	DIMENSIONS (m)	WEIGHT EMPTY	PART NUMBER
40 cu ft / 2-8 tonnes	Skid	2	750	2.2 x 1.7 x 2.2	2 tonne	HIBMS402TVH750BV
75 cu ft / 5 tonnes	Skid	3	750	3.6 x 1.5 x 2.6	3 tonne	HIBMS75
120 cu ft / 8 tonnes	Trailer	4	950 or 1200	3.7 x 2.3 x 3.0	2.5 tonne	HIBMS120
160 cu ft / 10 tonnes	Trailer	4	1600	2.92 x 2.77 x 2.31	3.5 tonne	HIBMS1604TVH1600BV

BlastOne MegaBlasters™ are designed to maximise the cost savings of volume production. These high productivity blasting systems feature multi-outlet Thompson Valve™ II controls that allow each operator independent control of their abrasive media flow.

The number and size of the nozzles being used will determine the cfm required to run a MegaBlaster and keep adequate pressure at the nozzle tip. A typical setup will run off a 1600cfm/150psi Air compressor.

**Note:** Specific units are fitted with Air Powered Vacuum-loading system.

## BLAST ACCESSORIES



PRODUCT
High Performance Blast Nozzle (Sizing specified by compressor capabilities)
20m Bull Hose – Surelock Fittings
Superflex Blast hose (20 Metres) with Coupling & Nozzle holder
Fitted Deadman Line (20 Metres)
Deadman Handle- Pneumatic
Radex Filter with 2 outlets. Screw on with CJEN double action fittings included.
3/8 Breathing Air Line (20 Metres)
1" Airline 20m with a-type Fittings
Whip checks & coupling clips
1" to 2" Adaptor

BlastOne has a large range of blast accessories for use in blasting operations. Accessories available for rental include everything from the compressor right through to the nozzle to get you blasting.

Additional extension packages are available for hire if the job is longer than 20 metres from the hopper.

### Extension Accessories:

20m Superflex Extension Blast Hose with 2 x couplings
Fitted Deadman Line (20m)
3/8 Breathing Air Line (20 Metres)

## VRS 1



CAPACITY	DIMENSIONS (m)	WEIGHT	PART NUMBER
	1 x 0.6 x 1.4	100kg	HIVRS1

The VRS1 is ideal for smaller spot blasting and weld cleaning jobs. A very minimal amount of garnet/dust escapes into the air with this unit setup as the vacuum sucks the garnet back into the hopper after it impacts the substrate.

Minimum air supply of 150cfm/100psi is required to run this unit. Higher cfm rates will mean bigger nozzle use and much more effective and efficient blasting.

## VRS 2



CAPACITY	DIMENSIONS (m)	WEIGHT	PART NUMBER
1.0 cu ft/70kg of garnet	1.2 x 1.3 x 1.64	200kg	HIVRS2

The VRS2 is ideal for dustless continuous blasting small to medium-sized areas. A very minimal amount of garnet/dust escapes into the air with this unit setup as the vacuum sucks the garnet back into the hopper after it impacts the substrate.

Minimum air supply of 300cfm/100psi is required to run this unit. Higher cfm rates will mean bigger nozzle use and much more effective and efficient blasting.

## VRS 3



CAPACITY	DIMENSIONS (m)	WEIGHT	PART NUMBER
3.5 cu ft/230kg of garnet	2.4 x 1.24 x 4.24	8 tonne	HIVRS3

The VRS3 is built for large scale production Vacuum Blasting.

Minimum air supply of 670cfm/100psi is required to run this unit. Higher cfm rates will mean bigger nozzle use and much more effective and efficient blasting.

## BRS 3.5 CF



CAPACITY	DIMENSIONS (m)	WEIGHT	PART NUMBER
3.5 cu ft/230kg of garnet	1.7 x 1.4 x 2.2	1 tonne	HIVCBRS35

The BRS is a combined Blasting and Vacuuming machine for use with a Blast & Vac workhead.

The BRS incorporates a Blast machine, Eductor vacuum pump, Cyclonic Separator and Dust Collector into one compact package which can be easily transported from site to site or within buildings.

Minimum air supply of 950cfm/150psi is required to run this unit.



## M11 & M21 SODA BLASTER



CAPACITY	DIMENSIONS (m)	WEIGHT	PART NUMBER
1.0 cu ft/23kg of garnet	1.7 x 1.4 x 2.2	84kg	HIARM11
2.0 cu ft/45kg of garnet	1.3 x .83 x 0.6	294KG	HIARM21

Regulated M-Series AccuStrip™ Blast Machines are a multi-media unit which can be used with a wide range of media, including sodium bicarbonate, aluminum oxide, plastic media, glass beads and even steel grit.

An M-Series AccuStrip™ unit can extend a typical blasting contractor's services, skills and income base. Clean a surface of grease and oil, rust or a single layer of paint or strip off paint down to the substrate in one easy step.

## TRACKBLAST VERTICAL

TRAINING AVAILABLE ONSITE



WORKING WIDTH	WORKING AREAS	APPLICATION	PART NUMBER
350mm	vertical steel surfaces e.g. ship hulls, storage tanks (removal of coatings, paint, rust, mill scale)	Steel	HIEBE350VH

The TrackBlast Vertical Blasting Units are suspended from either a crane or a rigging system and operate in an up and down direction to clean and profile steel tanks or ship walls. They are remotely controlled from a mobile workstation.

A series of magnets pulls the unit against the steel work surface. This ensures that abrasive loss and dust emissions are kept to a minimum. The machine can operate in close proximity to follow-on painting procedures without loss of time.

Rigging systems are available for cone, dome and floating roof tanks. The Vertical Blast System includes Dust Collector and Control Panel.

## TRACKBLAST HORIZONTAL

TRAINING AVAILABLE ONSITE



WORKING WIDTH	WORKING AREAS	APPLICATION	PART NUMBER
350mm	Tank floors, ship decks, ect.	Steel	HIEBE350EH

TrackBlast Horizontal Blasting Units are specially manufactured for the Petrochemical Industry. They are designed to be easily disassembled and passed through a standard 2ft (600mm) tank access opening for blasting tank floors.

In shipyards these units can blast clean deck areas during normal maintenance programs or at sea without disrupting normal day to day operations.

The Blastrack Floor Blast System includes Dust Collector.

## BRISTLE BLASTER

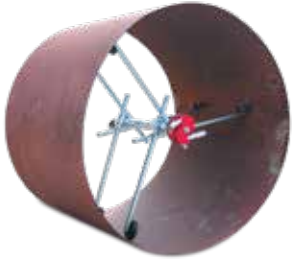


UNIT	WEIGHT	SPECIFICATIONS	PART NUMBER
Electric Bristle Blaster	4.9lb (2.2kg)	Does not include vacuum attachment	HIHTROTBPPE
Pneumatic Bristle Blaster	2.6lb (1.2kg)	Requires 10cfm, includes vacuum attachment	HIHTROTBPBA

The Bristle Blaster (Roto Blaster) is a portable surface conditioning kit ideal for small areas and 'touch up' work. The hand held electric unit can get into tight corners and angles. Achieves a surface roughness or profile of 1.5 - 4 mils (40-120 microns) with a finish similar to abrasive blasting, using hardened angled bristle wheels.

Note: Bristle Blaster wheels to be purchase only.

## JUMBO ROTORBLAST



### INTERNAL PIPE RESTRICTIONS

For pipes 30" to 60" (750mm to 1500mm) ID

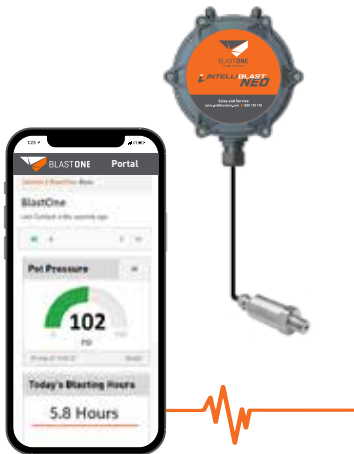
### PART NUMBER

HIIPC2000

As the tool passes through the length of the pipe being cleaned, abrasive is ejected by two special nozzles mounted on a rotating head. Optimal rotating speed is controlled by the braking system. An adjustable centering carriage supports the tool through the pipe internal.

**Call BlastOne on 1800 190 190 for more technical information on this unit and the custom fitting options recommended to suit your job.**

## INTELLIBLAST NEO



Using the latest IntelliBlast technology, the IntelliBlast NEO sends regular information updates to the cloud that can be reviewed remotely from any connected device.

The IntelliBlast NEO is available with all blast pots.

Power options include battery, mains power or solar.

**Call BlastOne on 1800 190 190 for more technical information on this unit and options recommended to suit your job.**



## DUSTLESS BLASTING

Say goodbye to dust and a sludgy, muddy, blast pot. This clever equipment controls dust while keeping the pot's abrasive dry and utilises as minimum water as possible. The result is dust suppression with NO Dust Soup!

### BLASTONE MIST BLASTER



OUTLETS	CAPACITY	DIMENSIONS (m)	WEIGHT	PART NUMBER
1 x TV	3.5 cu ft / 230 kg of garnet	0.6 x 0.8 x 1.4	180 kg	HIBMS35TVMB
1 x TV	6.5 cu ft / 430 kg of garnet	0.9 x 0.8 x 1.55	245 kg	HIBMS65TVMB

The BlastOne Mist Blaster™ improves dustless vapor blasting performance by providing you with the ability to do dry blasting and vapor mist blasting with the same blast pot, and have an effective wash down cycle.

- Uses as low as 1 litre per minute of water when blasting
- Can make wash down speeds up to 10 times faster
- 4 Settings Available:
  1. Dry
  2. Mist
  3. Washdown
  4. Blowdown

### AMPHIBLAST - MEGA



OUTLETS	CAPACITY	DIMENSIONS (m)	WEIGHT
4 x TV	120 cu ft / 8.2 T garnet	1.9 x 3.5 x 2.7	2900 kg

The Schmidt Bulk AmphiBlast is the latest in blasting technology and efficiency. This machine can give you wet blasting, dry blasting, wash down, and blow down simultaneously for the 4 different operators.

**Note:** The Bulk AmphiBlast is the first in its kind to offer wet or dry blasting in a bulk capacity! 4 Blasters each with individual control over how they want to blast.

- Blast at extreme and low pressures
- Each operator nozzle can be independently set for either wet blast, dry blast, soft-wash, or blow-down.
- Water consumption as low as 0.25L/minute
- Improved production speed by up to 5%

## AMPHIBLAST - 1 OUTLET



OUTLETS	CAPACITY	DIMENSIONS (m)	WEIGHT	PART NUMBER
1 x TV	1.5 cu ft	0.62 x 0.61 x 0.95	86 kg	HIBMS35TVAMPHILITPNU
1 x Tera	3.5 cu ft	0.83 x 0.58 x 1.34	123 kg	HIBMS35TVAMPHILITPN

The AmphiBlast system is the industry's new cutting edge, most efficient and productive dual-purpose abrasive blaster. Unlike other blast systems that mix abrasive and water inside the vessel, the AmphiBlast system injects water into the blast stream after the metering valve, using a patent-pending, user friendly and uniquely precise water injection.

- Blast at extreme and low pressures.
- Operator nozzle can be set for either wet blast, dry blast, soft-wash, or blow-down.
- Water consumption as low as 0.25L/minute.
- Improved production speed by up to 5%

## AMPHIBLAST - 2 OUTLET



OUTLETS	CAPACITY	DIMENSIONS (m)	WEIGHT	PART NUMBER
2 x TV	6.5 cu ft	96.5 x 221 x 165	615kg	HIBMS65TVAMPI

The AmphiBlast system is the industry's new cutting edge, most efficient and productive dual-purpose abrasive blaster. Unlike other blast systems that mix abrasive and water inside the vessel, the AmphiBlast system injects water into the blast stream after the metering valve, using a patent-pending, user friendly and uniquely precise water injection.

- Operate multiple nozzles/outlets simultaneously.
- Blast at extreme and low pressures
- Each operator nozzle can be independently set for either wet blast, dry blast, soft-wash, or blow-down.
- Water consumption as low as 0.25L/minute.
- Improved production speed by up to 5%

**Units are available as single pots or in a frame with tank.  
Enquire now to find out more.**





**BLASTONE**  
SUPERIOR PERFORMANCE

# AIR SUPPLY

- 16 Air Prep
- 16 Breathing Air Filter
- 17 Gas Monitor
- 17 Breathing Air Station
- 17 Breathing Air Hose
- 17 Air Pig



## AIR PREP



MODEL	IDEAL FOR	CAPACITY	WEIGHT	DIMENSIONS (m)	PART NUMBER
ACS 250	Small nozzle/air tools	350 cfm max. capacity	50kg	0.7 x 0.9 x 1.2	HIACS250
ACS 400	1 nozzle	630 cfm max. capacity	315kg	0.76 x 1.1 x 1.6	HIACS400
ACS 750	2-3 nozzles	1000 cfm max. capacity	450kg	0.85 x 1.25 x 1.9	HIACS750
ACS 950	3-4 nozzles	1360 cfm max. capacity	500kg	1.6 x 1.2 x 2.0	HIACS950
ACS 1200	4+ nozzles	1400 cfm max. capacity	525kg	1.7 x 0.9 x 2.15	HIACS1200
ACS 1600	4+ nozzles	1600 cfm max. capacity	650kg	1.9 x 0.95 x 2.2	HIACS1600

OPTIONAL EXTRAS	SIZE	LENGTH	FITTINGS
Bull Hose	2"	20m	Surelock <b>or</b> Spud coupling
Air Hose	1"		A type couplings

Many blasters who use AirPrep™ Moisture Removal Systems find that cool, dry compressed air actually blasts up to 15% faster. That's like 1 hour extra blasting each 8 hour day, free!

Dry air makes it much easier to control your abrasive flow. You almost never need to choke your Blast machine again. And by getting the abrasive metering just perfect many blasters find they use 25% less abrasive. Just by adding an AirPrep™ System to their blasting package (That also means cleaning up and disposing of 25% less abrasive)!

If you run air tools such as Graco Spray Pumps on clean dry air, they not only ice up less, they also require a lot less maintenance and last longer.

## BREATHING AIR FILTER



MODEL	NO. OUTLETS	PART NUMBER
Radex Filter	1-2	HIAPF3001
Radex Filter	6	HIAPF3000

The Radex Filter exceeds industry filtration standards so you can be assured that you or your workers won't suffer the consequences of contaminated air.





## GAS MONITOR



DESCRIPTION	PART NUMBER
Gx4 Gas Monitor	HIGX4

The RPB® GX4™ is an intelligent gas monitor that has the ability to detect up to 4 gases simultaneously, giving you assurance that the air you and your employees are breathing is safe.

**Note:** Calibration Check kit required if hired for a duration longer than 2 months.

## BREATHING AIR STATION



DESCRIPTION
Guardian Carbon Monoxide Remover Station

Portable breathing air station with regulator presented in rugged, protective carry case. Four operators can use the one machine. Four stage air purification system with carbon monoxide converter and continuous final-stage carbon monoxide monitoring with digital readout.

Inbuilt Carbon Monoxide warning alarm light and siren.

Powered by two x 9 Volt batteries – included. Optional 12 Volt external power lead.

## BREATHING AIR HOSE & BULL HOSE



DESCRIPTION
20 metre Breathing Air Hose
20m Bull Hose

Non-toxic liner for breathing air use complies with all International and NIOSH Standards. Tough yellow wrap jacket with crisp external markings. 3/8" (10mm) ID bore.

Use with threaded nut & tail fittings or approved safety double-action breathing airline quick connects. Rated up to 350 psi working pressure.

Standard supplied lengths are 50ft (15m), 66ft (20m) and bulk 500ft (150m) coils. Do not use ordinary Ryco, Nitto style quick connects.

Experience top-tier performance with the Megaflow Bull Air Hose, a heavy-duty air supply hose designed to stand up to the toughest conditions. Designed for extreme climates, the Megaflow Bull Air Hose operates effectively in a temperature range from -30°C to (+70°C).

It comes equipped with bull hose fittings, including screw types, bull hose spuds, bull hose nut & tails, and bull hose surelock fittings, providing you with multiple assembly options.

## AIR PIG



WEIGHT	DIMENSIONS (m)	PART NUMBER
22kg	0.6 X 0.5 X 0.34	HIAFAIRPIG

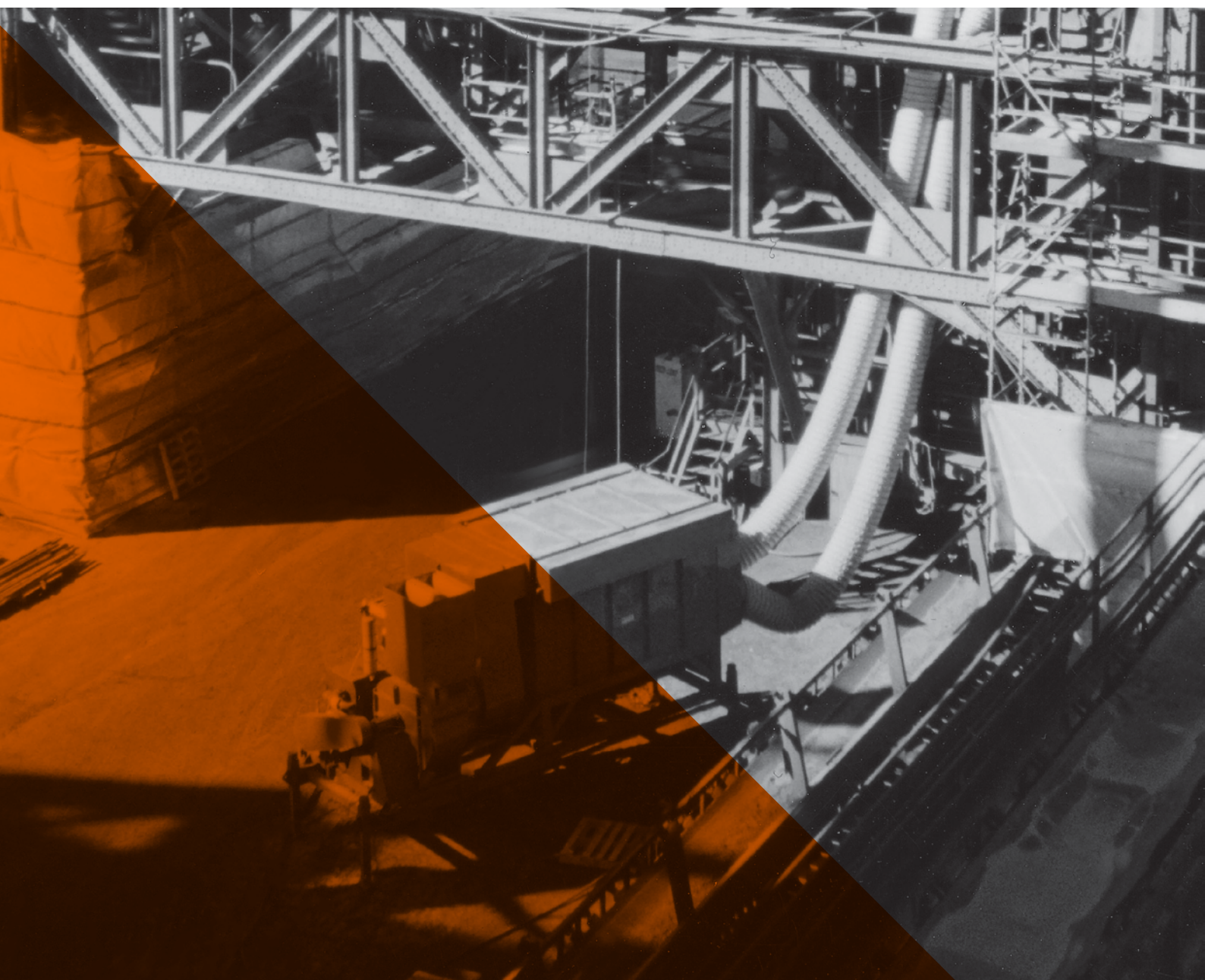
The Air Distribution (PIG) is an ideal way to distribute compressed air from one source into multiple different lines e.g 1 compressor and 5 different air tools to run.



**BLAST ONE**  
SUPERIOR PERFORMANCE

# SITE SYSTEMS

- |    |                            |    |                    |
|----|----------------------------|----|--------------------|
| 19 | Mobile Dust Collectors     | 24 | Dehumidifier       |
| 20 | Ventilation Fans           | 24 | Air Conditioner    |
| 20 | Decontamination units      | 24 | ICRT               |
| 21 | VacuLoad 1                 | 25 | Resource Centre    |
| 21 | VacuLoad 4 and Interceptor | 25 | Blast Rooms        |
| 21 | VacuLoad Diesel 300        | 26 | Lighting           |
| 22 | VacMax 600 Package         | 26 | Bunded Diesel Tank |
| 22 | VacuLoad 8 and Interceptor | 27 | Compressors        |
| 23 | Vacuum Accessories         | 27 | Generators         |
| 23 | Drum Vac 200cfm            | 27 | Sound Barriers     |
| 23 | Garnet Recycler            | 27 | Signage            |





# MOBILE DUST COLLECTORS

BlastOne Mobile Dust Collectors are available from 500 cfm to 40,000 cfm. They have been designed to look good, be easy to transport, be easy to use and require low maintenance. Units are powered by diesel engines or optional electric motors.

## How do Dust Collectors work?

Dust laden air travels down the ductwork and enters into the dirty air inlet plenum at the rear of the Dust Collector. Here the heavier particles drop out of the air stream. The air is then drawn through a large bank of high efficiency filter cartridges where the dust is deposited on the outside of the filter cartridges. Filtered air passes through to the clean air plenum and passes through the fan blower to atmosphere. The cake of dust on the cartridges is dislodged continuously by an automatic reverse pulse jet. Dust drops into the hopper of the collector and is transferred by a screw conveyor to a conveniently located dust outlet for easy transfer to a receptacle for disposal.

### DUST COLLECTOR 6K & 12K



CAPACITY	FILTERS	WEIGHT	DIMENSIONS (m)	OPERATING REQUIREMENTS	PART NUMBER
6,000 cfm	9	2.4 tonne	7.0 x 2.8 x 2.85		HIDFDC6
12,000 cfm	20	5 tonne	7.0 x 2.8 x 2.85	Fuel 17.3 L/h @ 1800rpm + Air, 50cfm @100 psi	HIDFDC12

Trailer Mounted Only. Supplied with a full set of UltraWeb filter cartridges.

Electric models also available to rent.

**Note: For Hazardous Projects filter cartridges must be purchased and disposed of by the hirer.**



### DUST COLLECTOR 20K & 27K



CAPACITY	FILTERS	WEIGHT	DIMENSIONS (m)	OPERATING REQUIREMENTS	PART NUMBER
20,000 cfm	30	7 tonne	6.5 x 2.44 x 2.8	Fuel 17.3 L/h @1800rpm + Air, 60cfm @100 psi	HIDFDC20
27,000 cfm	36	5.6 tonne	6.3 x 2.44 x 2.9	Fuel 14.6 L/h @1800rpm + Air, 80cfm @100 psi	HIDFDC27

Skid Mounted Only Available. Supplied with a full set of UltraWeb filter cartridges.

20,000cfm Hybrid Diesel / Electric Models Available

**Note: For Hazardous Projects filter cartridges must be purchased and disposed of by the hirer.**



## DUST COLLECTOR 40K



CAPACITY	FILTERS	WEIGHT	DIMENSIONS (m)	OPERATING REQUIREMENTS	PART NUMBER
40,000 cfm	56	10 tonne	8.3 x 2.9 x 3.4	Fuel 17.3 L/h @1800rpm + Air, 80cfm @100 psi	HIDFDC40

Skid Mounted Only Available. Supplied with a full set of UltraWeb filter cartridges.

**Note: For Hazardous Projects filter cartridges must be purchased and disposed of by the hirer.**

### OPTIONAL EXTRAS

Bunded Diesel Tank

## DUCTING



DESCRIPTION	PART NUMBER
10 metres of 500mm Flexible High-Wear Ducting	HIDCD2033H

BlastOne ducting has a tough coated membrane wrapping and spiral reinforcing ribs for suction applications. The ducting 'concertinas' for compact transportation and storage. It is fully flexible for adapting around bends, corners, etc.

**Note: 2 months minimum hire otherwise must be purchased.**

**HAZARDOUS PROJECTS: PURCHASE ONLY**

## VENTILATION FANS



DRIVE	CAPACITY	WEIGHT	DIMENSIONS (m)	OPERATING REQUIREMENTS	PART NUMBER
Pneumatic drive	10,000cfm	90 kg	0.9 x 0.77 x 0.8	Air, 175 cfm at 100psi	HIDCBMX20P
Electric drive 3 phase	9,200 cfm	120 kg	0.9 x 0.77 x 0.8	Elec 240V, 9.8 Amps	HIDCBMX20E3
Electric drive single phase	6,800 cfm	100 kg	0.9 x 0.77 x 0.8	Elec 415V, 7.5 Amps	HIDCBMX20E1
Electric drive 3 phase - EX d rated	9,200 cfm	130 kg	0.9 x 0.77 x 0.8	Elec 415V, 7.5 Amps	HIDCBMX20E3XD

Modular, portable 500mm diameter fan used for ventilating non-hazardous work areas. Air powered fan 10,000 cfm nominal air flow (requires 125-175 cfm compressed air). Single phase electric fan 6,000 cfm nominal air flow. Three phase electric fan 10,000 cfm nominal air flow.

Dust sock filter bag accessory to control visible, non toxic, nuisance dust. \*Purchase Only\*

Fit 500mm Ducting and/or Dust Sock.

## DECONTAMINATION UNITS



	WEIGHT	DIMENSIONS (m)	PART NUMBER
Air lock 5 Chamber Decontamination Unit	1.5t	4.0 x 2.2 x 2.6	HIDFDECON2

Decontamination is essential for workers when leaving the containment work area after working on Hazardous Projects, such as Lead-Based Paint removal. Lead can be absorbed through the respiratory and digestive system – therefore it is critical to remove any contaminated clothes and wash immediately after exiting a work area (especially before handling any food).

The BlastOne Portable Decontamination Systems are trailer mounted, which allows it to be easily manoeuvred close to the exit of the containment.

**Note: Must be returned free of contamination.**



## VAC 1



DESCRIPTION	CONVEYING CAPACITY	WEIGHT	DIMENSIONS (m)	OPERATING REQUIREMENTS	PART NUMBER
Vacload 1	1.8 tonne/hour		1.8 x 0.89 x 1.8	Air 350cfm @ 120 psi	HIVAVACULOAD1

The Vacload 1 is small, compact and powerful, making it one of the most preferred vacuum systems on the market.

The Vacload I has many uses:

- Vacuum recovery of bulk abrasive
- Vacuum blasting (act as vacuum source)
- Vacuum shrouded hand tools
- Vacuum loading of blast pots

## VAC 4 AND INTERCEPTOR



DESCRIPTION	CONVEYING CAPACITY	WEIGHT	DIMENSIONS (m)	OPERATING REQUIREMENTS	PART NUMBER
Vacload 4	5 tonne	800 kg	1.9 x 1.3 x 2.6	Air 700 -900 cfm at 120 psi	HIVAVACULOAD4
Interceptor 55	3.8 tonne	790 kg	1.5 x 1.6 x 2.4		HIVAVACUINT55

On some blasting projects you have to move your spent abrasive from A.... all the way to.... B. From ships hulls from inside tanks or from bridge containments, sometimes you just can't use a wheelbarrow and shovel. These projects call for an efficient vacuum system that can suck up spent used abrasives and collect it at a central point ready for recycling or disposal.

The Vacuload™ systems have been specially designed for blasting sites and for handling abrasive. Powered by compressed air which saves you the cost of another expensive motor (when you have finished blasting simply switch your compressed air lines from your Blast machines to your Vacuload™ system and you're in recovery mode).

The vacuum is generated by a specially designed, air powered Educator pump that is inexpensive, efficient and requires very little maintenance.

Additional rent for 20 metres of Tigerflex High wear suction hose and Pickup tool.

**NOTE: For use on Hazardous materials vacuum hose & filter cartridges must be purchased.**

## VACULOAD 300 DIESEL SYSTEM



DESCRIPTION	CAPACITY	WEIGHT	DIMENSIONS (m)	PART NUMBER
Vacuload 300 Diesel System	Diesel 850cfm Trailer vacuum	1850 kg	3.7 x 2.5 x 2.9	HIVAVACULOAD300

The Vacuload 300 is a diesel powered rugged vacuum system with the ability to be towed behind a standard vehicle. The Vacuload 300 features a positive displacement vacuum blower rated for 850 CFM, capable of 15" Hg suction, and includes an elevating cyclonic separation hopper with bag house.

This unit is typically used with a 3" vacuum hose for conveying liquids and abrasives up to 100 metres.

**NOTE: For use on Hazardous materials vacuum hose & filter cartridges must be purchased.**

## VACMAX 600 PACKAGE



DESCRIPTION	CAPACITY	WEIGHT	DIMENSIONS (m)	PART NUMBER
VacMax 600	Diesel 2630cfm Trailer Vacuum	4.3 tonne	4.9 x 3.4 x 2.53	HIVCVMX600

The VacMax™ is designed for rugged, reliable operation featuring powerful vacuuming capability with a very minimum daily maintenance. The VacMax™ will pneumatically convey material from distances in excess of 1000 feet. Any material that is flowable, whether liquid, slurry or solid, or able to move through a 4", 5" or 6" diameter hose, can be handled with this equipment.

Package includes 20 metres of Tigerflex high wear suction hose and pickup tool.

**NOTE:** For use on Hazardous materials vacuum hose & filter cartridges must be purchased.

## VAC 8 AND INTERCEPTOR

DESCRIPTION	CAPACITY	WEIGHT	DIMENSIONS (m)	OPERATING REQUIREMENTS	PART NUMBER
Super Vac 8	Diesel Vac pump & filter chamber Skid mount	6 tonne	4.7 x 2.0 x 2.5 + filter chamber	Fuel L/h, Unit has an onboard compressor for the pulse system 6"vac inlet	HIVAVACLOAD8
Interceptor 100	6.8 tonnes	850 kg	1.9 x 1.9 x 4.1	4" vac inlet – 6" outlet	HIVAVACUINT100

With a powerful 230HP motor, the new Diesel Vacuload™ 8 can suck up new or spent abrasive, slurry and even sludge with ease. Powerful suction allows FAST cleaning over long distances. The Vacuload™ 8 from BlastOne is the safer, greener alternative that brags a reduced sound level. Compared with a Vacuum Truck, there are cost advantages with the ability to bring the Vacuload™ 8 and deliver on site for maximum efficiency. No waiting for a SuperSucker! Using a diesel motor gives you the independence of not having to worry about bringing a compressor to each job. The Vacuload™ 8 is the answer – more power, more convenience and no costly generator.





## VACUUM ACCESSORIES

### VACUUM ACCESSORIES FOR VAC SYSTEMS



TigerFlex Vacuum Hose (20m)

Pickup Tools

## DRUM VAC 200CFM



### APPLICATION

Ideal for clean up of smaller amounts of abrasive

### OPERATING REQUIREMENTS

Air Requirements 200cfm Drum Vac

### PART NUMBER

HIVATL200

Package includes 20 metres of high wear suction hose and pickup tool.

## GARNET RECYCLER

### DESCRIPTION

MK Combi  
Garnet Recycler

### CAPACITY

Up to 7 tonne per hour

### DIMENSIONS (m)

2.5 x 1.8 x 4.8

### OPERATING REQUIREMENTS

Compressed air 40 cfm @ 100psi

### PART NUMBER

HIMKCOMBI

Abrasive Recycling Systems give you the ability to use your abrasive over and over again for maximum cost savings. Abrasive consumption as low as 0.3 lbs Garnet per ft<sup>2</sup> (1.5kg Garnet per m<sup>2</sup>) have been reported by very satisfied customers with recycling. Recycling allows for greatly reduced abrasive purchases and reduced transport, handling and disposal costs.

The Abrasive Recycling System can be accurately adjusted to achieve the optimum particle size balance for any particular blasting requirement. Recycling is done in a dry process. Wet or damp abrasive must be dried prior to reprocessing.



## DEHUMIDIFIER

TRAINING  
AVAILABLE  
ONSITE



CAPACITY	WEIGHT	DIMENSIONS (m)	OPERATING REQUIREMENTS	PART NUMBER
2000 cfm	400 kg	2.84 x 1.2 x 2.1	Elec Only. 415V, Full load 50Amps , hard wired. Fitted with 50amp plug	HIDFDH2500
6500 cfm	680 kg	2.84 x 1.2 x 2.1	Elec. Only. 415V, Full load 160 Amps. Hard wired	HIDFDH6500

Introducing Dehumidified Air into an enclosed work area will reduce the RH significantly. If the humidity is reduced to below 50% RH, you can effectively 'hold the blast' on uncoated, blasted steel for days – sometimes weeks! This typically will have a huge impact on a production cycle – imagine being able to blast non-stop for a week before having to stop, clean up and paint!

Additional extras include 10 metre length of 450mm Dehumidifier ducting.

55kw Precooler/Air Conditioner also available to suit

## 55KW AIR CONDITIONER



CAPACITY	WEIGHT	DIMENSIONS (m)	OPERATING REQUIREMENTS	PART NUMBER
6000 cfm	1300 kg	2.3 x 2.8 x 2.14	415V, Full load 38.5 A, hard wired	HIRAC55

55 kW Skid Mounted Packaged Refrigerated Air Cooler. Suitable for stand alone use, or in conjunction with 6500cfm Dehumidifier.

## EX RATED AIR CONDITIONER



CAPACITY	WEIGHT	DIMENSIONS (m)	OPERATING REQUIREMENTS	PART NUMBER
500 cfm	105 kg	0.46 x 0.51 x 1.12	240V, 15.7A	HIRAC6EX2

500cfm EX Rated Air Cooler.

Call BlastOne on 1800 190 190 for more technical information on this unit.

## ICRT UNIT



CAPACITY	OPERATING REQUIREMENTS	PART NUMBER
2.0 cu ft/45kg of garnet	Elec. 415v 125Amp. Recommended generator: 180 kVA + Water supply 10 L per minute @ 60- psi min for cooling	HIICRT

The induction coating remover works by the principle of induction. Heat is generated in the steel substrate and the bonding is broken. The coating is then removed entirely without disintegrating and completely free from contaminating agents, i.e., blast media. This obviously makes disposal and recycling of waste easier and cheaper. Even inside the pitting's and cracks in the surface the coating is disbonded.

Call BlastOne on 1800 190 190 for more technical information on this unit.





## BLASTONE RESOURCE CENTRE



DIMENSIONS (m)	WEIGHT
8.45 x 1.4 x 1.965	300 kg

The BlastOne Resource Centre brings technology right to the workforce. Once connected to power and Wi-Fi, this unit enables vendor managed inventory as well as access to BlastOne's comprehensive range of Technical Resources. This unit comes standard with a 43 inch Digital Screen which can be used for various reasons such as presenting and troubleshooting.

## INFLATABLE BLAST ROOM



INTERNAL WORKING DIMENSIONS	WEIGHT (PACKAGED)	PART NUMBER
4500 L x 3000 W x 3000 H	65kg (1 pallet)	HIINFBLASTROOM

The BlastOne inflatable blast rooms enable you to rapidly create a totally enclosed environment in minutes. Typical applications include blasting of large items that are difficult to transport, and provision of temporary facilities on remote sites.

The BlastOne inflatable blast rooms are extremely easy to set - 1 man can do this in under 5 mins!

Includes provision for connection of dust extraction fan.

## CONTAINER BLAST ROOM



DIMENSIONS (m)	DESCRIPTION	PART NUMBER
2.4 x 2.4 x 6.0	Container Blastroom 20 ft	HICONT20BLAST
2.4 X 2.4 X 12.0	Container Blastroom 40 ft	HICONT40BLAST

Sometimes you just need another small blast room that you can put in the corner of your facility or need something that you can move from job to job.

A containerised blast room to allow ultimate flexibility.

## SAFETY LED WORK LIGHT



UNIT	FEATURES
Rechargeable Safety LED Work Light	1500 Lumens Intrinsically Safe

These Pelican work lights are the most safety approved handheld lights on the market. It's 1500 lumens illuminate hazardous locations, and with two power settings this unit extends burn time up to 10 hours of clean even light.

## EX RATED WORK LIGHT



UNIT	FEATURES	DIMENSIONS (m)
Rechargeable Safety LED Work Light	2000 Lumens Battery Powered	430 x 260 x 390 mm 13.8kg

The powerful SA LUMIN LED Rechargeable Floodlight is lightweight and fully portable. Hosting an intense light output of up to 2000 lumens. Being fully certified for Zones 1 & 2 (Gas) and Zones 21 & 22 (Dust) it has been designed to make working in confined spaces even safer.

Featuring no trailing cables vastly reduces trip hazards, while the powerful light output easily illuminates the working environment. Ergonomically designed for easy manoeuvrability, it is extremely user friendly.

## MOBILE LIGHTING TOWER



INTERNAL WORKING DIMENSIONS (m)	WEIGHT (PACKAGED)	DIMENSIONS (m)
340 x 150 x 233	1115 kg	

The BlastOne range of mobile lighting towers produce maximum light visibility and performance for continuous night work in a wide range of applications.

The general specifications for this unit are as follows:

- 4 x 1000W Metal Halide Light
- Max Mast Height: 9M
- Mast lifting system: Hydraulic
- Engine: Kubota Diesel

## BUNDED DIESEL TANKS



DESCRIPTION	CAPACITY	PART NUMBER
Bunded Diesel Tank	1000L or 2000L	HIDFDT20TCGP

Today's job sites run on diesel.

These tanks provide safe & efficient storage, and mean you can have easy access to fuel for your compressors, dust collectors and any other diesel powered equipment! Reduces the need for on site fuel deliveries.

- 1000L or 2000L available.

Add a tank to your next rental quote request!



## COMPRESSOR



### DESCRIPTION

Diesel Trailer High Pressure compressors

### PART NUMBER

HICO100-1600

BlastOne supplies a range of heavy duty air compressors, varying in size from 100cfm–1600cfm.

## GENERATORS



### DESCRIPTION

Portable Diesel Generators

### PART NUMBER

HIGEN20-250

BlastOne supplies a range of portable diesel generators, range of stationary generators are built tough, making them ideal for operators seeking a consistent source of power for 24/7 operations across a wide variety of applications. varying in size from 20kVa – 250kVa.

## SOUND BARRIERS



### DESCRIPTION

Acoustic Sound Barrier

### DIMENSIONS (m)

2.04 x 1.24

### PART NUMBER

HIPCAAC2012

Acoustic Curtains are sound-absorbing panels which have an acoustic foam laminate to control noise levels by up to 25dbA and are Fire Resistant.

## SITE WARNING SIGNS



### DIMENSIONS (m)

600mm W x 400mm H, 10kg

Site Warning signs to protect your staff and pedestrians. Steel sign supplied with frame as pictured.

Sign options as follows:

- DANGER Abrasive Blasting and Spray Painting in Progress
- DANGER Lead Work Area Authorised Personnel Only
- DANGER UHP Waterjetting in Progress



**BLAST ONE**  
SUPERIOR PERFORMANCE

# SPRAY SYSTEMS

- 29 Airless Spray Pumps
- 29 Standard Systems
- 29 Internal Pipe Sprayer
- 30 Plural XP 70
- 30 Plural XM System
- 30 XM Plural PFP System





## AIRLESS SPRAY PUMPS



MODEL	RATIO	WEIGHT	DIMENSIONS (m)
-------	-------	--------	----------------

TO BE ADVISED – VARIES ACCORDING TO MODEL			
---	--	--	--

Graco High-pressure air-operated airless sprayers provide long-lasting durability that boosts your productivity. Models available from 48:1 to 72:1 ratios to easily handle the toughest protective coatings and corrosion control materials.

**Note: Airless Paint Line and Guns are not available for Hire. Purchase only.**

### OPTIONAL EXTRAS

Hopper feed (cart mounted or freestanding)
--

Viscon heater 240v
--------------------

## STANDARD SYSTEMS



MODEL	WEIGHT	PART NUMBER
-------	--------	-------------

Triton 308 Pump	12 kg	HIGM233482
-----------------	-------	------------

Ultra Max II 1095	60 kg	HIGMULTRA1095
-------------------	-------	---------------

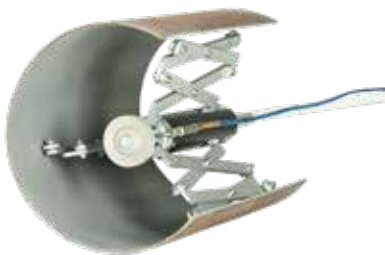
Ultra Max II 695	43 kg	HIGMULTRA695
------------------	-------	--------------

Triton is an air-operated diaphragm spray package that applies a high quality, decorative finish to wood and metal parts. It is a more effective alternative to traditional pressure pots and standard diaphragm pumps.

Ultra Max II is Graco's family of professional electric airless sprayers. The Ultra Max II brand is the preferred choice of contractors world-wide and is proven to deliver the features professionals demand whether they are working on residential, commercial, or industrial jobs.

**Note: Airless Paint Line and Guns are not available for Hire. Purchase only.**

## INTERNAL PIPE SPRAYER



MODEL	OPERATING REQUIREMENTS
-------	------------------------

Roto Sprayer	14 cfm air supply, Airless Pump
--------------	---------------------------------

The Roto Sprayer is built for heavy robust coatings. It connects up to a high pressure pump sprays the product through a rotating airless tip onto the internal surface as the machine is pulled through the pipe.

**Call BlastOne on 1800 190 190 for more technical information on this unit and the custom fitting options recommended to suit your job.**

## PLURAL XP 70

COMPULSORY  
TRAINING  
REQUIRED



### MODEL

XP 70 Plural Pump System

### PART NUMBER

HIGMXP70

The Graco XP70 Plural-Component Sprayer is designed to pump, mix and atomize high-viscosity, high-solids coatings with superior results. In addition, the XP70's design allows you to gravity feed, which may eliminate the need for feed pumps, saving you money.

When you upgrade from hand mixing, you'll find that the XP70 provides excellent return on investment, by reducing material waste and by using less clean-up solvent.

**Call BlastOne on 1800 190 190 for more technical information on this unit and the custom fitting options recommended to suit your job.**

**Note: BlastOne Does not hire hose sets, guns or manifolds. These products are Purchase only. Compulsory onsite training required with machine.**

## PLURAL XM SYSTEM

COMPULSORY  
TRAINING  
REQUIRED



### MODEL

XP Plural System

### PART NUMBER

HIGMXP70

Engineered to handle the toughest protective coatings, the Graco XM Plural-Component Sprayer provides precise ratio control, allows users to download historical spraying data, and handles a wide range of two-component materials.

At the heart of the ratio control is Graco's advanced dosing technology. The major component is constantly flowing while the minor component is injected at higher pressures. Advanced sensing technology allows pumps to compensate for pressure fluctuations, resulting in accurate, on-ratio mixing for better yield and less waste.

Ideally suited for marine, bridge, rail and wind energy applications, the Graco XM is fully configurable for your specific coatings job.

**Call BlastOne on 1800 190 190 for more technical information on this unit and the custom fitting options recommended to suit your job.**

**Note: BlastOne Does not hire hose sets, guns or manifolds. These products are Purchase only. Compulsory onsite training required with machine.**

## XM PLURAL PFP SYSTEM

COMPULSORY  
TRAINING  
REQUIRED



### MODEL

XP Plural PFP System

Passive fire protection (PFP) coatings make structures more resistant to fire by insulating structural steel from high temperatures and as a result, buy time for the evacuation before structural collapse.

The Graco XM™ PFP Plural-Component Sprayer offers data reporting technology, so you can confirm that epoxy intumescent coatings are sprayed on-ratio, at requirements set by the manufacturer. The XM PFP is easy to use, maintains consistent temperature control and offers precise ratio control.

**Call BlastOne on 1800 190 190 for more technical information on this unit and the custom fitting options recommended to suit your job.**

**Note: BlastOne Does not hire hose sets, guns, heaters or manifolds. These products are Purchase only.**

**Compulsory onsite training required with machine.**



**BLAST ONE**  
SUPERIOR PERFORMANCE

# UHP WATERJET

- 32 5,000 PSI Water Blast Pump
- 32 15,000 PSI Water Blast Pump
- 32 20,000 PSI Water Jet Pump
- 32 40,000 PSI UHP Water Jet Pump
- 33 40,000 PSI Zone Rated UHP Pump
- 33 5,000 PSI Zone Rated
- 34 40,000 PSI Deck Mower
- 34 40,000 PSI NLB Crawler
- 34 UHP Protective Clothing



## 5,000 PSI WATERBLAST



MODEL	DIMENSIONS (m)	WEIGHT	PART NUMBER
5,000 PSI, 23 LPM Diesel Powered Water Blaster	0.9 x 0.8 x 1.0	250 kg	HIBJ5000D

Compact diesel powered, skid mounted unit for heavy duty cleaning applications.

- 5,000 PSI (350 bar)
- 23 litre/minute
- 20 litre fuel tank
- Supplied with 20M HP hose and gun
- Mounted on skid base with protective frame

## 15,000 PSI WATERBLAST



MODEL	DIMENSIONS (m)	WEIGHT	PART NUMBER
15,000 PSI, 25 LPM Diesel Powered Water Blaster	1.55 x 0.92 x 1.25	250 kg	HIBJ5000D

This compact heavy-duty diesel-powered high pressure water blaster is suited for the removal of marine growth, loose and flaking paint, build-ups of grease, oil and heavy mineral deposits, and heavy calcification from the surface of concrete.

- 15,000 PSI (1000 bar)
- 20 litre/minute
- 90 litre fuel tank
- Supplied with 20M HP hose and gun
- Mounted on heavy-duty tandem trailer

## 20,000 PSI WATERJET

COMPULSORY  
TRAINING  
REQUIRED



MODEL	DIMENSIONS (m)	WEIGHT	PART NUMBER
20,000 PSI, 87 LPM Diesel Powered Water Blaster	2.5 x 1.8 x 2.2	4700 kg	HIWJ20305D

Diesel powered, skid mounted high pressure cleaning unit for heavy duty cleaning applications, including marine growth removal, grate cleaning, heat exchanger tube cleaning, concrete demolition, water-jet cutting and internal pipe cleaning. Low speed pump to minimise sound output.

- 20,000 PSI (1380 bar)
- 87 litre/minute
- 300 litre fuel tank
- Supplied with 30M HP hose and Dump Gun

## 40,000 PSI WATERJET

COMPULSORY  
TRAINING  
REQUIRED



MODEL	DIMENSIONS (m)	WEIGHT	PART NUMBER
40,000 PSI, 38 LPM Diesel Powered Ultra-High Pressure (UHP) Water Jetting Unit	2.5 x 1.8 x 2.2	4700 kg	HIWJ40305D

Diesel powered, skid mounted ultra-high pressure cleaning unit for surface preparation applications involving the removal of paint coatings and rust from steel or concrete.

This unit is ideal for use with 2 guns, Deck Stripper or Ship-side Crawler unit.

- 40,000 PSI (2800 bar)
- 38 litre/minute
- 300 litre fuel tank
- Supplied with UHP hoses and 2 x Rotating Lance





## 20,000 PSI WATERBLAST



MODEL	DIMENSIONS (m)	WEIGHT	PART NUMBER
20,000 PSI 163 LPM, Diesel Powered Water Blaster	20 ft Shipping Container	6820 kg	HIWJ20605D

Diesel powered, skid mounted high pressure cleaning unit for heavy duty cleaning applications, including marine growth removal, grate cleaning, heat exchanger tube cleaning, concrete demolition, water-jet cutting and internal pipe cleaning. Low speed pump to minimise sound output.

- 20,000 PSI (1380 bar)
- 163 litre/minute
- 600 litre fuel tank
- Mounted inside 20ft shipping container
- Ideal for use with the Conjet Concrete Removal Robot under the 'Robotics' section

## 5,000 PSI ZONE RATED



MODEL	DIMENSIONS (m)	WEIGHT	PART NUMBER
5000psi Zone Rated Electric Water Blaster	1.06 x 0.76 x 0.85	275 kg	HIBJ5000EX

A compact portable electric powered high pressure water blaster for use in Hazardous areas. Operating at 5000psi and 21 lpm it quickly and efficiently blasts away dirt and grime, saving you time and effort. Ideal for surface preparation, defouling and heavy industrial cleaning.

- 5,000 PSI (350 bar) @ 21 litre/minute
- Portable frame with wheels
- Supplied with 20M HP hose and gun
- 3 phase Electric Motor, 32A. Zone Rated

## 40,000 PSI ZONE RATED



MODEL	DIMENSIONS (m)	WEIGHT	PART NUMBER
Zone 2 rated 40,000 PSI, 34 LPM Diesel Powered Ultra-High Pressure (UHP) Water Jetting unit for use in hazardous areas	2.44 x 2.99 x 2.59	6820 kg	HIWJ40275D-ATEX HIWJ40275D-IECEX

Diesel powered, skid mounted ultra-high pressure cleaning unit for surface preparation applications involving the removal of paint coatings and rust from steel or concrete. This unit is ideal for use with 1-2 guns, Deck Stripper or Ship-side Crawler unit.

This unit is compliant to ATEX/IECEX Zone 2 for use in Hazardous areas.

- 40,000 PSI (2800 bar)
- 34 litre/minute
- 300 litre fuel tank
- Mounted in DNV2.7 container with lifting slings

## 40,000 PSI DECK MOWER



MODEL	DIMENSIONS (m)	WEIGHT	PART NUMBER
40,000 PSI Rated Deck 'Mower'		635 kg	HIRNL36995015A

The UHP 'Mower' is used for the rapid removal of old coatings and rust from ship decks, tank floors, and concrete floors using 40,000 PSI water. Can also be used for scarification of concrete. Includes vacuum port for connection to vacuum source.

- 400mm Cleaning Width
- Requires 50 CFM Air Supply for Nozzle Rotation

## 40,000 PSI NLB CRAWLER



MODEL	DIMENSIONS (m)	WEIGHT	PART NUMBER
40,000 PSI SRT-10W NLB Vacuum attached Crawler		84 kg	HIRNLSRT10W1

The NLB SRT-10W Crawler is held to the surface by vacuum. This means that this tool can be used on all flat surfaces including steel, aluminium, and concrete. The unit is remote controlled by an operator from up to 100M away. The connected vacuum source removes all water and debris - leaving the surface clean and dry ready for repainting. Rated to 40,000 psi.

- 250mm Cleaning Width
- 100mm Vacuum Connection
- Requires 20 CFM air supply for drive system and nozzle rotation

## UHP PPE



MODEL	DIMENSIONS (m)
TST WaterJet Protection Clothing	Size S - 4XL

We have a complete assortment of personnel protection equipment for water jetting, water blasting and hydro demolition at High and Ultra High Pressures (HP and UHP).

Our range has been developed to offer the best possible comfort, and at the same time protecting from water jets from 7000psi up to 3000 bar/43,500 psi.

We stock Trousers, Jackets, Gaiters, Hand Protections as well as Helmets & Hose protectors.

Available for rental or purchase.



**BLAST ONE**  
SUPERIOR PERFORMANCE

# ROBOTICS

- 36 40,000 PSI VertiDrive V400
- 36 Abrasive/Waster Blasting Robot VertiDrive V700
- 36 Conjet Concrete Removal Robot
- 36 NLB Micro-Arm



## 40,000 PSI VERTIDRIVE V400



MODEL	DIMENSIONS (m)	WEIGHT	PART NUMBER
40,000 PSI VertiDrive M4 Magnetic Robot Crawler		73 kg	HIRUBVDV400

The VertiDrive V400 Robot is held to the surface by very strong magnets, enabling the crawler to attach to the decks, sides, and bottoms of ships; walls, floors and roofs of tanks, and any other large flat surfaces. The unit is remote controlled by an operator from up to 100M away. A vacuum port enables the connection of an external vacuum source to remove the water and debris. Rated for up to 40,000psi

- 400mm Cleaning Width
- 75mm Vacuum Connection
- Low Voltage Electric Drive System

## ABRASIVE/WATER BLASTING ROBOT VERTIDRIVE V700



MODEL	DIMENSIONS (m)	WEIGHT	PART NUMBER
VertiDrive Vertical Abrasive/Water Blasting Robot			HIRUBVDV700

The magnetically attached VertiDrive V700 Abrasive/Water Blasting Robot is able to strip horizontal and vertical steel surfaces - even upside down. This tool will greatly enhance safety by taking the blaster away from the nozzle, and enhance productivity using 2 blast nozzles at once. The variable swing arm enables a path of up to 2M to be cleaned in one pass. Low voltage electric drive system.

## CONJET CONCRETE REMOVAL ROBOT



MODEL	DIMENSIONS (m)	WEIGHT	PART NUMBER
Diesel Powered Automated Concrete Removal Robot	2.87 x 1.2 x 3.56	2700 kg	HIRUCJ557MPAXL

The track-driven and fully computerised Conjet robot 557 MPA is equipped with an MPA (Multi-purpose Arm) that allows you to easily regulate and position the cutting head with the help of the remote control. Collectively with the adjustable chassis and track extension, the robot is versatile and compact with unique reach and stability. The robot 557 MPA is also prepared with a sliding main frame to adjust the robot's centre of gravity to ensure stability during overhead operation. This unit is available with a diesel or electric powered engine.

- Fully automated via the Conjet ONE control system
- Up to 5 m vertical reach
- Main body can slide back up to 400mm for increased stability
- Tool-kits available ensures multipurpose use
- Diesel or electric power
- Easy access to the engine and hydraulics for daily maintenance
- Automatic Stability Control system

## NLB MICRO-ARM



MODEL	DIMENSIONS (m)	WEIGHT	PART NUMBER
Remote Controlled Automated Remote Manipulator	2.7 x 0.7 x 1.0	454 kg	HIRNLMICROARM

Productivity and safety can coexist in NLB's newest entry into hands-free water jetting, the Micro-ARM™. The Micro-ARM [Automated Remote Manipulator] is a remotely-controlled water blasting tool that allows the operator to be removed far from the blast area and offering relief from the ergonomic fatigue of manual water jetting with a lance.

For use with High and Ultra-High Pressure Water Blast equipment keeping the operators out of harms way.



**BLAST ONE**  
SUPERIOR PERFORMANCE

# INSTRUMENTS

- 38 DeFelsko PosiTector Kit
- 38 Automatic Adhesion Tester
- 38 Manual Adhesion Tester
- 39 Testex Style Gauge
- 39 Elcometer 456
- 39 Wet Sponge Detector
- 39 Holiday Detector
- 39 DeFelsko HHD Holiday Detector



## POSITECTOR KIT

ALL INSTRUMENTS  
AVAILABLE FOR  
OVERNIGHT  
SHIPMENT



### MODEL

PosiTector 6000 3 in 1 Kit

PosiTector Gauge & Dry Film Thickness Probe (DFT)

PosiTector Gauge & Dew Point Meter Gauge (DPM)

PosiTector Gauge & 200 D Probe

PosiTector Gauge & UTG 206 D Probe (Single)

### INCLUDES

Includes 6000 Gauge, Dew Point Meter Probe, Dry Film Thickness Probe and Surface Profile Probe

The Defelsko PosiTector 6000 is the most robust and versatile gauge on the market. We have a large selection of probes on offer for rental from the standard Dry Film Thickness Probe through to the complex Ultrasonic UTG 206 D probe.



## AUTOMATIC ADHESION TESTER



### UNIT

Automatic Adhesion Tester

Measures adhesion of coatings to metal, wood, concrete and other rigid substrates.

Electronically controlled hydraulic pump automatically applies smooth and continuous pull-off pressure. Greatly reduces user effort and the risk of influencing the pulling process

Conforms to international standards including ASTM D4541/D7234, ISO 4624/16276-1, AS/NZS 1580.408.5 and others. Available in Automatic or Manual models.

## MANUAL ADHESION TESTER



### UNIT

Manual Adhesion Tester

Measures adhesion of coatings to metal, wood, concrete and other rigid substrates.

Manual hydraulic pump designed to apply smooth and continuous pressure with a single stroke.

Conforms to international standards including ASTM D4541/D7234, ISO 4624/16276-1, AS/NZS 1580.408.5 and others. Available in Automatic or Manual models.



## TESTEX STYLE GAUGE



### MODEL

Manual & Digital models available

The Testex Gauge is used to measure the Testex Tape replica and determine the average maximum peak-to-valley height of the blasted profile.

**Note: Testex tape available for purchase only**

## ELCOMETER 456



### UNIT

Elcometer 456 Gauge and Probe

Dry Film Thickness Gauge.

Various probe options available.

## WET SPONGE DETECTOR



### UNIT

Wet Sponge Pinhole Detector

### VOLTS

9 volt

Wet sponge method is used for testing non-conductive coatings up to 300 microns (12 mils) over conductive substrates. It is a Compact, hand held unit which has an audible pinhole detection alarm

## HOLIDAY DETECTOR



### UNIT

Holiday Detector

### VOLTS

1 - 15 kVa, 1-30 kVa options

High Voltage These units are used to detect holes, known as holidays or discontinuities, in a coating.

Various models available, talk to us about your requirements.

## DEFELSKO HHD



### UNIT

Holiday Detector

### VOLTS

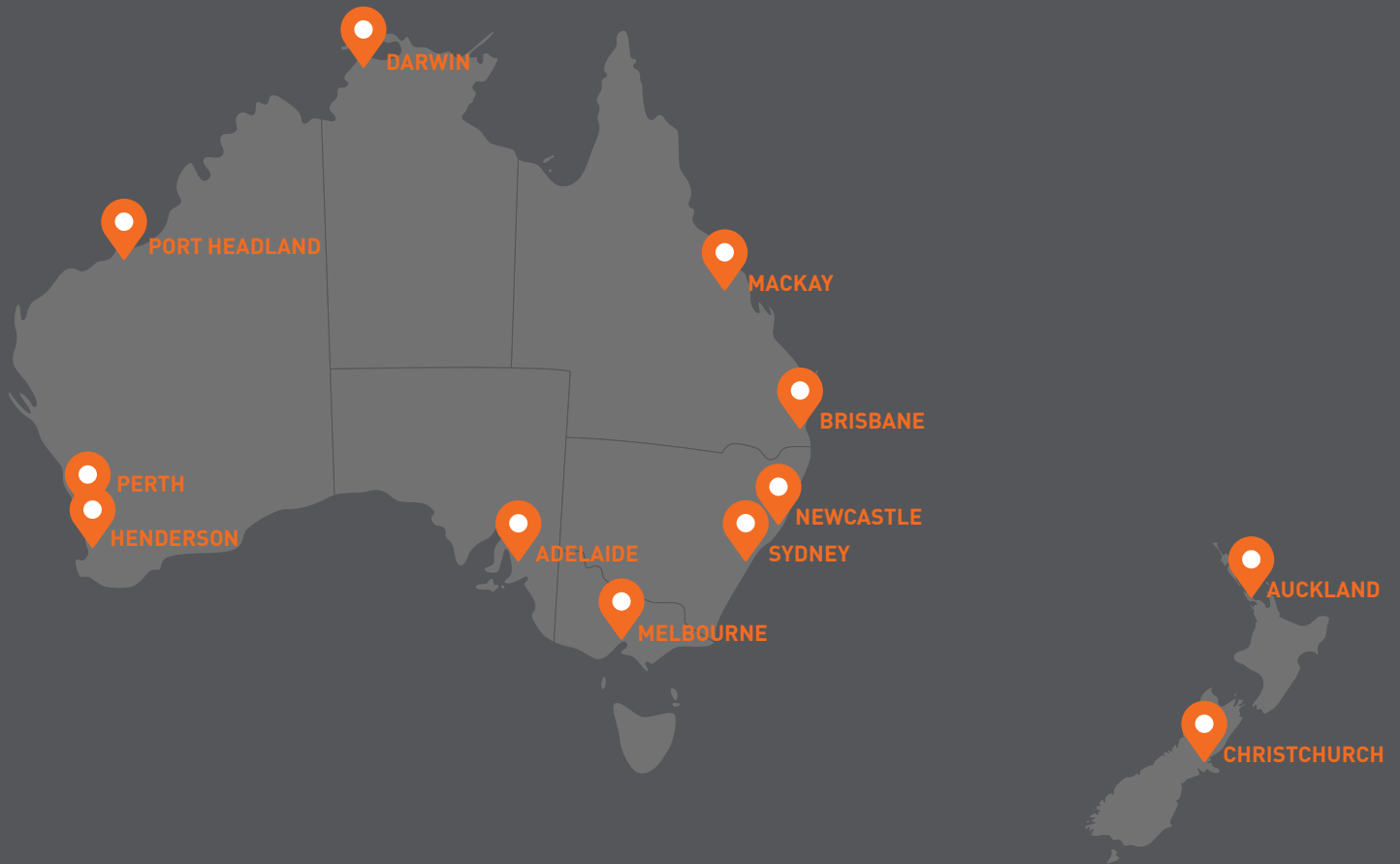
0.5 - 35 kV

NEW Defelsko HHD Holiday Detector. Latest state of the art unit with adjustable voltage from 0.5kV to 35kV. Range of brushes and pipe rolling-spring probes available to suit different applications.

- Coating thickness: up to 20mm
- Typical Battery Life: 30 - 40 hours

# RENTAL LOCATIONS

## AUSTRALIA AND NEW ZEALAND



**BLASTONE**  
SUPERIOR PERFORMANCE

### AUSTRALIA

Adelaide | Darwin | Brisbane | Mackay |  
Sydney | Newcastle | Melbourne |  
Perth | Port Hedland

1800 190 190  
sales.au@blastone.com

### NEW ZEALAND

Auckland | Christchurch  
0800 190 190  
sales.nz@blastone.com

### MALAYSIA

Kuala Lumpur  
03-7725-0371  
sales.my@blastone.com

### NORTH AMERICA

Columbus | Chicago | Hampton Roads |  
Houston | Jacksonville | Los Angeles |  
Minneapolis | Portland | Tacoma

1-800-999-1881  
sales@blastone.com