

VERTIDRIVE

SURFACE PREPARATION ROBOTS

MANUAL BLASTING

MORE LABOR AT DANGEROUS HEIGHTS



VS

VERTIDRIVE

FASTER, SAFER & CLEANER



vertidrive

UHP AND ABRASIVE BLASTING ROBOTS

The VertiDrive provides a convenient solution for removing industrial coatings, corrosion, and other contaminants from large steel surfaces, like storage tanks and ship hulls.

As our most productive solution for cleaning curved and irregular steel surfaces, the VertiDrive is faster, safer and more cost-efficient.

Learn more at blastone.com/vertidrive

KEY BENEFITS:

- ▶ Does the Work of up to 5 manual blasters
- ▶ Use up to 3 SnakeBite nozzles simultaneously
- ▶ Automate timing and speed
- ▶ Blast walls, floors, even upside-down
- ▶ Wireless control with joy stick
- ▶ Keeps operators out of harm's way

DON'T PLAY CATCH-UP WITH YOUR COMPETITION!

THERE'S AN EXPLODING TREND TOWARD ROBOTIC CLEANING

SEE OUR CASE STUDIES PAGE



TANK STORAGE

THE WORLD'S FASTEST TANK
TURNAROUNDS

With a 3-8x productivity multiplier, VertiDrive robots are positioned to complete the most time intensive portion of a turn-around (the blasting) faster and safer than traditional manual labor.

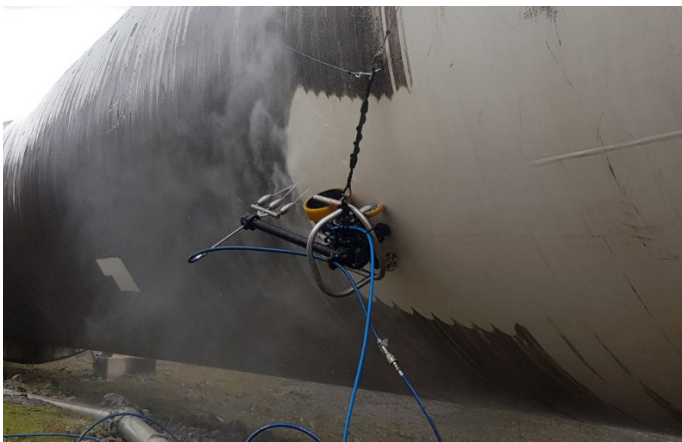
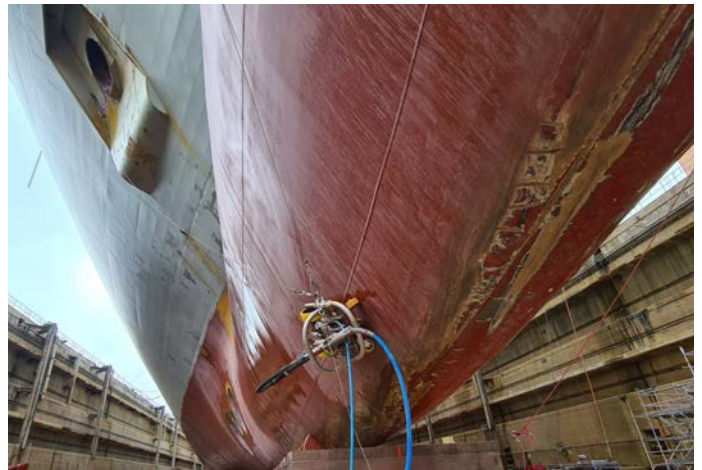


MARITIME

VERTICAL, HORIZONTAL, EVEN
UPSIDE DOWN

Marine vessels require frequent cleaning and re-painting to preserve the integrity of the steel while underwater.

The repair downtime for such assets is extremely costly. Magnetic VertiDrive robots are the perfect solution to handle the task as quickly as possible.



PENSTOCKS

FASTER, SAFER, CLEANER

Using UHP/High-Pressure washing to remove outer coatings or contaminants is faster and much safer for both workers and the surrounding environment.

Minimum 15ft diameter.

vertidrive

THE MOST EFFECTIVE SOLUTION FOR CLEANING LARGE STEEL SURFACES

Whether you're abrasive blasting, using UHP or just need to pressure wash a surface, VertiDrive delivers all the benefits you need to surpass/exceed your own expectations.



7 BENEFITS THAT DRIVE YOUR OUTPUT TO ITS HIGHEST LEVEL



INCREASES PRODUCTIVITY

Accommodates up to 3 #10 SnakeBite nozzles



IMPROVES SAFETY

Reduces blasters exposure to heights, and dangerous pressures



SIMPLE TO OPERATE

Manual joystick or automated advancing capabilities



3-IN-1 VERSATILITY

Robots with multiple capabilities: abrasive, UHP, pressure washing



CONSISTENT BLAST

Timed swing arm delivers consistent profile



USE LESS ABRASIVE

The metered consistency of the blast reduces abrasive waste



RENTABLE

Rent the equipment, own the success

vertidrive

WE CREATE INNOVATIONS THAT STICK

We reinvented the way to clean steel surfaces in dangerous places.

Our robots are designed to effectively remove dirt, paint and coatings on various steel surfaces like storage tanks, ship hulls and other large steel structures.



RENT OR PURCHASE?

WHICH IS BETTER FOR YOUR COMPANY?



WE RECOMMEND YOU RENT IF...

- You've never used a VertiDrive before (Try before you buy!)
- Your work is time & material
- You're expanding operations and newly bidding into tank & maritime markets
- You're experiencing a temporary labor shortage and need 3-8x productivity from skeleton crew
- You would like ongoing on-site support from BlastOne

Typical Return on Investment is 10,000 ft² of surface preparation



WE RECOMMEND YOU BUY IF...

- You blast tanks or ships (large flat steel surfaces) with over 250,000ft² per year
- Your customer is a facility owner that has a desire to decrease men working at heights
- You suffer from continual shortages in your labor force
- You're looking for more ways to blast faster, safer and cleaner
- You have several lump sum jobs in your forecast

Typical Return on Investment is 250,000 ft² of surface preparation



CONTACT US

Contact BlastOne to calculate ROI on your upcoming project

We take a holistic approach to projects and review far more than just how to use this robot. We will draw on our 40+ years of industry experience and give you real-life support.

VertiDrive V700

The most versatile and powerful mobile abrasive blasting robot in the market

VertiDrive is designed for tough industrial environments and it's stronger than ever due to its reinforced frame. With powerful magnets, the VertiDrive can work on any surface, even upside down. Plus, it's incredibly versatile and can switch between three applications in just minutes.



KEY BENEFITS

- ▶ Up to 8x more efficient
- ▶ Up to 600 ft²/60 m² per hour (Abrasive Blast)
- ▶ Up to 400 ft²/40 m² per hour (UHP)
- ▶ Up to 1,000 ft²/100 m² per hour (Pressure Wash)
- ▶ Reduces access requirements (staging, cranes)
- ▶ Can hold 3 #10 SnakeBite blast nozzles

3 APPLICATION OPTIONS FOR YOUR PROJECT

ABRASIVE BLASTING

This method provides a brand-new profile on the blasted surface.

- Blast up to 600ft² (60m²) per hour.
- Capable of holding up to 3 #10 SnakeBite blast nozzles. Max. 600 N at 3.28ft (1m) arm length
- Can house any blast hose and nozzle between 0.7874" to 3.1496" [20mm to 80mm]

ULTRA HIGH PRESSURE

This method will restore the surface to its original surface profile.

Best for removal of coatings, paints, liners, corrosion, and anti-fouling systems.

- Max. 43500 psi @ 10.5F gal/min (Max. 3000 bar @ 40 l/min)
- Achieve up to 400ft² (40m²)
- 60" (1500 mm) cleaning width

HIGH PRESSURE WASHING

This method maintains the underlying coatings and liners.

Best for the removal of contaminations like oils, fouling, salts, and others.

- Up to 14500 psi @ 21.1 gal/min (Max. 1000 bar @ 80 l/min)
- 1 or 3 self-rotating nozzle application

CASE STUDY: WORKFORCE REDUCED BY UP TO 50%

Abrasive Blasting

In October 2021, Lakehead sought to improve their blasting operations at the Husky Refinery in Superior, WI. Tasked with preparing an 80-foot diameter tank floor, a standard project typically requiring 5-6 laborers, Lakehead aimed to optimize labor efficiency.

SETUP

To meet their objectives, we introduced the VertiDrive Abrasive Blast Robot to their operation. Equipped with three #7 Hyper nozzles and an Amphiblast Bulk Pot blasting dry, this innovative machine utilized GMA GX2 garnet, recognized for its superior blasting performance.

RESULTS

The results were impressive. The VertiDrive delivered a remarkable cleaning rate of 320 sq. ft/hr. Labor requirements were slashed from the usual 5-6 laborers to just three, a decrease of approximately 40% to 50% in labor resources. This boosted efficiency also allowed the team to blast an additional 3 feet up the tank walls, a task not typically achievable with the previous setup.



CONCLUSION

Lakehead was extremely satisfied with the performance of the VertiDrive. So much so, they decided to purchase the machine, demonstrating the transformative impact this technology can have on industrial blasting operations. By significantly reducing labor requirements and increasing safety and productivity, the VertiDrive is truly revolutionizing the industry.

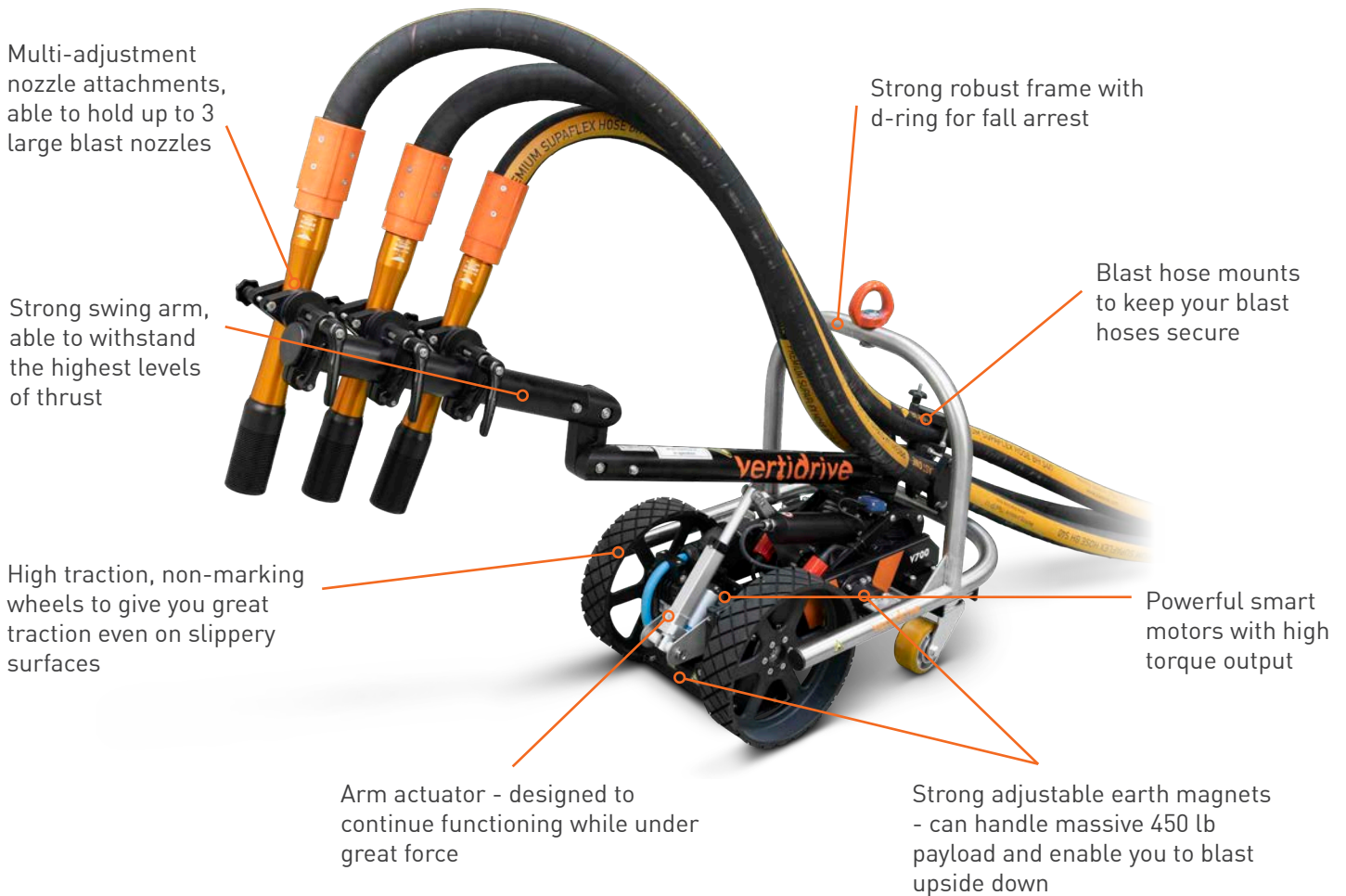


LEARN MORE ABOUT THE
VertiDrive IN ACTION



Check out our case studies online

V700 PRODUCT DIAGRAM



APPLICATION SPECIFICATIONS

ABRASIVE BLASTING

- > Up to 3 nozzles
- > Max. 600 N (60 kg force) at 1m arm length

ULTRA-HIGH PRESSURE

- > Max. 43,500 psi @ 10.5 gal/min (Max. 3000 bar @ 40 l/min)

HIGH PRESSURE WASHING

- > **1000 Bar Version**
Max. 14500 psi @ 21.1 gal/min (Up to 1000 bar @ 80 l/min)
- > **500 Bar Version**
Up to 7251 psi @ 26.41 gal/min (Up to 500 bar @ 100 l/min)
- > 1 or 3 self-rotating nozzle application

TECHNICAL SPECIFICATIONS

ROBOT

> Robot dimensions	29.5" x 20.5" x 28.5" (750mm L x 520mm W x 720mm H)
> Weight	137 lbs (62 kg)
> Payload capacity	397 lbs (180 kg)
> Driving speed	Max. 16.4 ft (5m/min)
> Holding power magnets	Up to 1984 lbs (900 kg)
> Minimal radius required	>13 ft (4m) radius (26 ft diameter)
> Max operational windspeed	50 knots / 25 m/s
> Adjustable magnets	0.28" to 0.51" (From 7 to 13mm)
> Drive motors	2x 315W
> Swing arm motor	1x 315W

SWING ARM

> Torque capacity (horizontal)	Max 150 Nm (15 kg at 1m arm length).
> Torque capacity (vertical)	Max 600 N (60 kg force) at 1m arm length
> Swing arm speed	Max 30 %/s.

UMBILICAL POWER CABLE

> Dimensions	ø 0.7", length 164 ft (50 m)
> Weight	55 lb (0.33 lb/ft) 25 kg (0.5 kg / m)
> Extension	Max 328 ft (100m)

CONTROL BOX

> Input voltage range	230V systems: 200-240 VAC 120V systems: 100-120 VAC
> Input frequency range	50/60 Hz
> Input current (without cooling)	230V systems: 5A, 120V systems: 10A
> Input current (with cooling)	230V systems: 7A, 120V systems: 14A
> Working temp. (without cooling)	0 to +95°F (-20 to +35°C)
> Working temp. (with cooling)	0 to +120°F (-20 to +50°C)
> Output voltage to the robot	70 VDC (motors) and 24 VDC (logic).
> Dimensions	24" H x 24" W x 10" D (24" x 27" x 10" with optional cooling)
> Weight	77 lb (97 lb for 'high temperature' systems with cooling)

REMOTE SYSTEM

> Remote control system	Hetronic Nova XL
> Remote control range	328 ft (100 meters)

ENVIRONMENTAL CONDITIONS

> Storage temperature	-40 to +185°F (-40 to +85°C)
> IP rating robot	IP65
> IP rating control box	IP66
> IP rating remote control	IP66

vertidrive
V700
 WE CREATE
 INNOVATIONS
 THAT STICK

VertiDrive V400

Enclosed UHP works up to 5X faster

VertiDrive is the strongest and most robust robotic solution for enclosed UHP water blasting and washing. With large steel assets like storage tanks and ships, the VertiDrive works up to 5x faster, increasing the availability of assets.



KEY BENEFITS

- ▶ 5x more efficient
- ▶ Up to 450 ft²/40 m² per hour
- ▶ Safe, clean and efficient one blaster operation
- ▶ Reduces access requirements (staging, cranes)
- ▶ Mitigates flash rust with powerful vacuum head
- ▶ Effortlessly collect waste water, separate waste materials, and store
- ▶ Easy accessibility to most horizontal, overhead and vertical surfaces

3 COMMON SCENARIOS FOR VACUUM WATER BLASTING

THICK MARINE COATINGS

Vacuum water blasting, like the V400 tool, is a game-changer when dealing with thick marine coatings. The V400 makes sure the blasting is safe, allowing other tasks nearby to go on. Harmful stuff like lead and toxic mixes from coatings gets sucked up by the vacuum, protecting workers and the environment.

50-60 MIL TANK FLOORS

To renew tank floors with 50-60 mil thick coatings, the V400 closed vacuum water blasting excels. Safety in tight spots is a given, plus the blast-vacuum combo rapidly dries the surface. Unlike manual blasting, there's no messy sludge cleanup, saving time, effort, and therefore, money.

RUBBERIZED COATINGS

UHP water jetting cuts the rubber coating quicker than abrasives and removes it completely. With the V400 closed blasting system, the floor or walls also remain undamaged while maintaining its original profile. Only the coatings are removed.

CASE STUDY: WATER TANK REFURBISHMENT

Yarra Valley Water quietly renovates tank in busy suburb

One of Yarra Valley Water’s largest water tanks received its biggest overhaul in its 50 year history. The huge water tank which holds 26.5 million litres (7 million gallons) of water (enough to fill 11 Olympic-sized swimming pools) underwent pressure washing, repair of corrosion damage and repainting works.

The water tank is located near residential neighborhoods. In order to minimize the noise, Yarra Valley Water researched new technology and came across the magnetic VertiDrive robot.



SOLUTION



The VertiDrive blasted Yarra Valley Water’s largest water tank at 40,000psi. This environmentally friendly process strips off the old coating while a vacuum recovers all the paint chips and waste water in one pass. Additionally, the noise and dust levels were reduced.

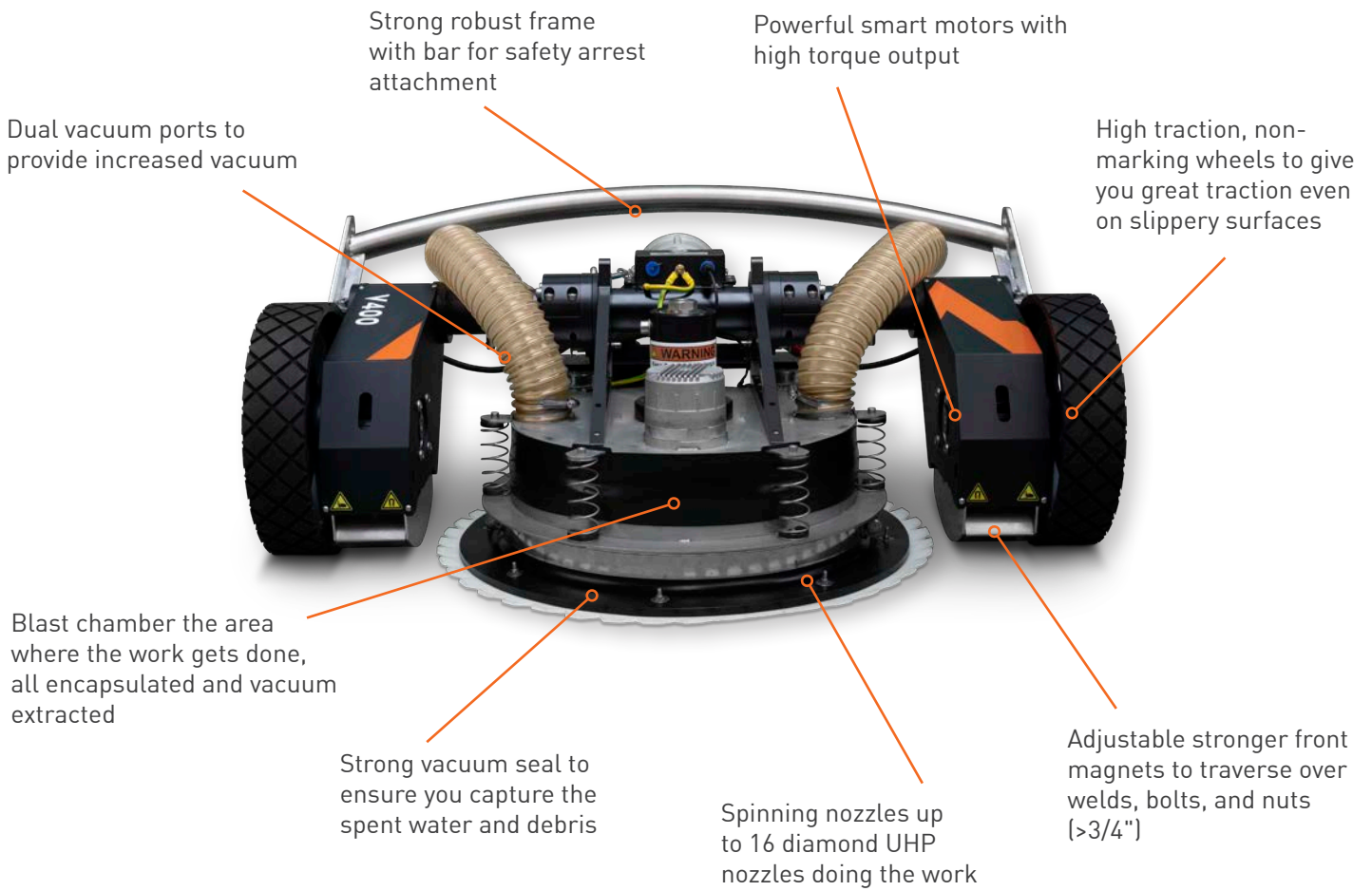
RESULTS

Because the tank’s underlying steel was not badly corroded, they did not need to grit blast. The high pressure water was enough to expose the underlying surface profile created when previously blasted.

The project took two months to complete, which was much faster than the expected timeline. Three crews worked simultaneously pressure washing, sanding and painting.



V400 PRODUCT DIAGRAM



APPLICATION SPECIFICATIONS

ULTRA-HIGH PRESSURE

- > Max. 43,500 psi @ 10.5 gal/min
Max. 3000 bar @ 40 l/min
- > Cleaning Width 15.75" (400mm)
- > Self-rotating cross with 16 x M10 nozzles
- > Average up to 450 ft² per hour (45m²)

TECHNICAL SPECIFICATIONS

ROBOT

> Robot dimensions	35.5" x 39" x 16.5" 900mm L x 990mm W x 420mm H
> Weight	194 lbs (88 kg)
> Payload capacity	330 lbs (150 kg)
> Driving speed	Max. 16.4 ft/min (5m/min)
> Holding power magnets	Up to 660 lbs (300 kg)
> Minimal Radius Required	>32ft (10m) radius (65 ft diameter)
> Max operational Windspeed	50 knots / 57 mph
> Adjustable Magnets	From 0.16" to 0.47" (4 to 12mm)
> Drive Motors	2x 315W

UMBILICAL POWER CABLE

> Dimensions	ø 0.7", length 164 ft (50 m)
> Weight	55 lb (0.33 lb/ft) 25 kg (0.5 kg / m)
> Extension	Max 164 ft (50m)

CONTROL BOX

> Input voltage range	230V systems: 200-240 VAC 120V systems: 100-120 VAC
> Input frequency range	50/60 Hz
> Input current (without cooling)	230V systems: 5A, 120V systems: 10A
> Input current (with cooling)	230V systems: 7A, 120V systems: 14A
> Working temp. (without cooling)	0 to +95°F (-20 to +35°C)
> Working temp. (with cooling)	0 to +120°F (-20 to +50°C)
> Output voltage to the robot	70 VDC (motors) and 24 VDC (logic).
> Dimensions	24" H x 24" W x 10" D (24" x 27" x 10" with optional cooling)
> Weight	77 lb (97 lb for 'high temperature' systems with cooling)

REMOTE SYSTEM

> Remote control System	Hetronic Nova XL
> Range remote control	Up to 328 ft (100 meters)

ENVIRONMENTAL CONDITIONS

> Storage temperature	-40 to +185°F (-40 to +85°C)
> IP rating robot	IP65
> IP rating control box	IP66
> IP rating remote control	IP66

vertidrive
WE CREATE INNOVATIONS THAT STICK
V400

COATINGS REMOVED: MILLSCALE



PROJECT: 2 Tank Internals (1660 m² / 17, 868 ft²)

COATING REMOVED: New Steel

CUSTOMER: Alphatech Sdn Bhd

LOCATION: Banting, Selangor, Malaysia

DATE: April 5, 2023

SETUP: VertiDrive M7 with 2 SnakeBite #6 nozzles, 6.5 Blast Pot with TeraValve, Air Prep, Blue Wizard Extractor Fan using GMA SpeedBlast Garnet

RESULTS: 322 ft²/hr (30 m²/hr).
Consumption rate of 4.4 lbs/ft² (20 kg/m²)

PREVIOUS RESULTS BEFORE VERTIDRIVE:

24 hour operation - 2 shifts of 4 blasters each. Using the VertiDrive they only needed 1 blaster for 3 hours (per tank) to compensate for the 10% upper sphere radius the VertiDrive was unable to navigate

COMMENTS: Had 3 weeks time constraint on two tanks and therefore wanted an alternative to scaffolding costs: assembly/disassembly time and rental fees.



PROJECT: 180ft Diameter Tank

COATING REMOVED: New Steel

CUSTOMER: Brock

LOCATION: Salt Lake City, UT, USA

DATE: November 11, 2021

SETUP: VertiDrive M7 with 2 #8 Ultra Nozzles, AmphiBlast with GMA NewSteel Garnet, plus 2 additional manual blasters

RESULTS: 600 ft²/hr (55.7 m²/hr) Verti+Blasters. 400 ft²/hr (37 m²/hr) VertiDrive only

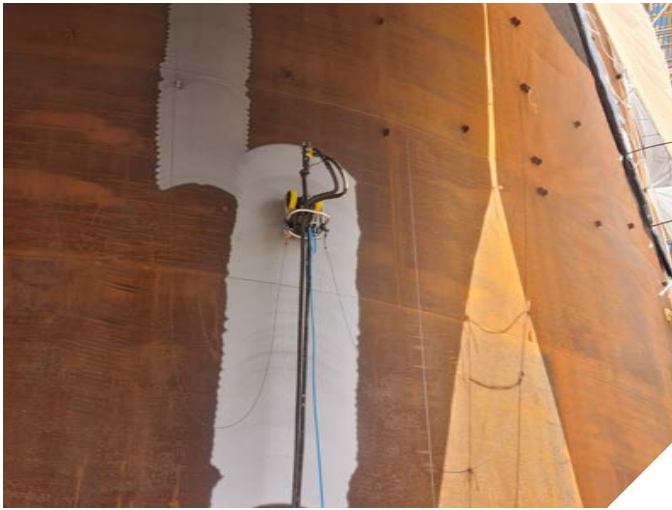
PREVIOUS RESULTS BEFORE VERTIDRIVE:

400 ft²/hr - 4 blasters. Blasters were accomplishing less than 100 ft²/hr (standard is 150 ft²/hr). Reduced labor by one and VertiDrive itself blasted 2X both remaining laborers combined

COMMENTS: The VertiDrive also blasted the roof. Customer liked the performance and kept the machine on site to use on another tank.



COATINGS REMOVED: MILLSCALE



PROJECT: 120ft New Fuel Storage Tank External
COATING REMOVED: New Steel
CUSTOMER: Civmec
LOCATION: BCSBP Kwinana, WA, Australia
DATE: October 16, 2020
SETUP: VertiDrive M7 with 2 x #7 Hyper nozzles running at 110 psi at the nozzle using GMA SpeedBlast

RESULTS: 600 ft²/hour (55.7 m²/hr) to NACE 3 finish and 3 mil profile, reduced laborers from 3 down to 1 (66% reduction!)

PREVIOUS RESULTS BEFORE VERTIDRIVE:
 Required 2 blasters and 1 spotter



PROJECT: 225ft Diameter Fuel Tank Floor
COATING REMOVED: New Steel
CUSTOMER: Moore Painting
LOCATION: Tank Farm - Patoka, IL, USA
DATE: October 16, 2020
SETUP: VertiDrive M7 with 2 Ultra #8 nozzles, using GMA GX2 Garnet

RESULTS: 400 ft²/hr at 3.7 lbs/ft² (37 m²/hr at 0.16 kg/m²)



COATINGS REMOVED: 5-15 MILS



PROJECT: Fuel Storage Tank External

COATING REMOVED: 6-10 mils

CUSTOMER: Quincy Industrial Painting

LOCATION: Iowa, USA

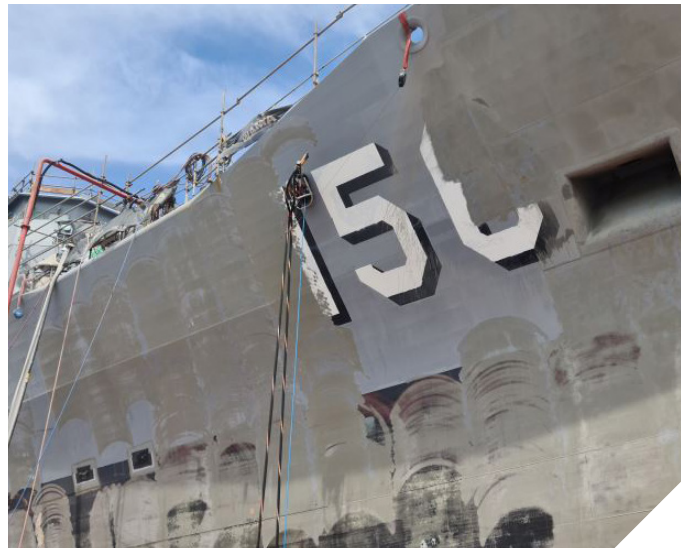
DATE: May 12, 2022

SETUP: VertiDrive M7 with 2 x #7 UltraTuff nozzles with a 6 ton bulk pot

RESULTS: 270 ft²/hour (25 m²/hr) with a NACE 2.5 finish, while reducing labor by 50%

PREVIOUS RESULTS BEFORE VERTIDRIVE:

4 men (3 blasters plus spotter) down 50% to 2 (1 operator and 1 blaster doing touch ups) with the VertiDrive.



PROJECT: RAN Navy Vessel

COATING REMOVED: 7mils [175 microns] of top coat only - International Intershield 300

CUSTOMER: Eptec

LOCATION: Henderson Naval Shipyard, WA, Australia

DATE: October 23, 2021

SETUP: VertiDrive M7 with 2 #7 SnakeBite nozzles, AmphiBlast with 1600 Air Dryer plus 2 manual nozzles on man lifts using GMA PremiumBlast

RESULTS: 366 ft²/hr (34 m²/hr) removing the top coat only, reduced blasters from 4 to 2. Reduced manlift equipment requirements

PREVIOUS RESULTS BEFORE VERTIDRIVE:

4 Blasters with an additional spotter

COMMENTS: Pressure dialed down to 90psi at the nozzle to ensure blasting operation did not remove the mid coat.



COATINGS REMOVED: 12-15 MILS



PROJECT: 50ft Diameter Jet Fuel Tank
COATING REMOVED: 12-15 mils epoxy urethane
CUSTOMER: Graham Industrial Coatings
LOCATION: Eielson Air Force Base - Fairbanks North Star, AK, USA
DATE: June 8, 2021
SETUP: VertiDrive M7 with 2 #8 UltraTuff nozzles, using AmphiBlast and coal slag abrasive

RESULTS: 260 ft²/hr (24 m²/hr)

PREVIOUS RESULTS BEFORE VERTIDRIVE:
 Foreman stated they averaged 95 ft²/hr (8.8 m²/hr) for the tank right next to this one

COMMENTS: Blasted to SP10. Used manual hand cut-ins.



PROJECT: Spherical Tank
COATING REMOVED: 12-15 mils epoxy urethane
CUSTOMER: Brock
LOCATION: Bayway TX, USA
DATE: December 7, 2022
SETUP: M7 VertiDrive with 2 #8 Hyper nozzles, using 6 ton Bulk AmphiBlast at 104 psi with nickel slag

RESULTS: 260 ft²/hr (24 m²/hr)

PREVIOUS RESULTS BEFORE VERTIDRIVE:
 4 blasters with an additional spotter

COMMENTS: The customer did not make all the adjustments we advised, however they still had success. They used Emerald Blast and standard hoses. They had some compressor failures which did result in production limitations.



COATINGS REMOVED: 12-20 MILS



PROJECT: Crude Oil Storage Tank
COATING REMOVED: Epoxy 12-20 mils
CUSTOMER: Glindemann Industrial Coatings
LOCATION: Queensland, AU
DATE: 2020

SETUP: VertiDrive M7, 20,000 psi pump @ 14.22 gal/min flow (approx 1400 bar @ 6 lpm)

RESULTS: WJ2 Clean, 62.5% reduction in workforce required (from 8 to 3), Completed project 4 days earlier than schedule (14 vs 18 days)

PREVIOUS RESULTS BEFORE VERTIDRIVE:
Required 8 workers

COMMENTS: The VertiDrive M7 was used for 75 hours in total at an astonishing average production rate of 840 ft² (78 m²) per hour.



PROJECT: Floating Crude Oil Tank Roof
COATING REMOVED: 3-layer Epoxy 12-20 mils
CUSTOMER: Persy Steel Protection
LOCATION: Rotterdam, Netherlands
DATE: March 2017

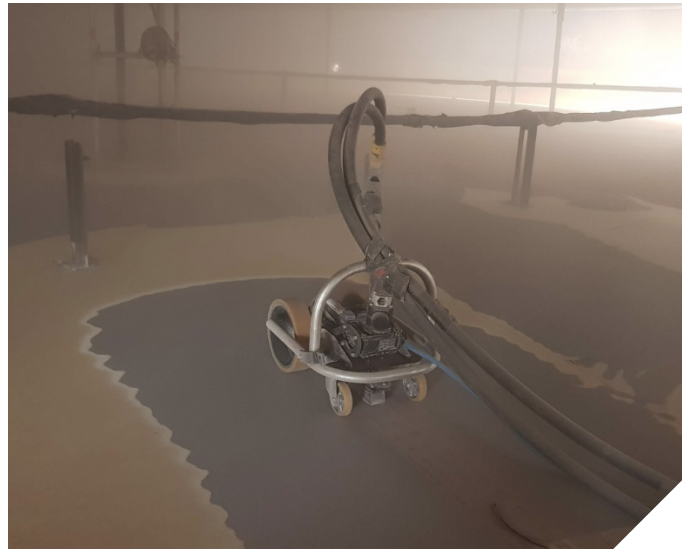
SETUP: VertiDrive M4 UHP with Vacuum System, 36,000 psi @ 8.5 gal/min (2500 bar @ 32 lpm), vacuum capacity 1,100 m³/hr at 650 cfm

RESULTS: Average production rate of 3,200-4,300 ft² (300-400 m²) per 8-hour shift

COMMENTS: Waste water treated and disposed of responsibly.



COATINGS REMOVED: 15-20 MILS



PROJECT: Water Tank

COATING REMOVED: Epoxy 15-20 mils

CUSTOMER: Moore Painting

LOCATION: Eureka, CA, USA

DATE: August 17, 2022

SETUP: M7 VertiDrive with 2 #8 nozzles using GMA GX2 Garnet

RESULTS: 280 ft²/hr (26 m²/hr) and finished entire tank shell in 3 days. 40% faster!

PREVIOUS RESULTS BEFORE VERTIDRIVE:

Previously required 5 days of blasting to complete



PROJECT: 180ft Diameter Diesel Storage Tank Floor

COATING REMOVED: Epoxy 15-20 mils

CUSTOMER: BP

LOCATION: Bulwer Island, QLD, Australia

DATE: January 15, 2020

SETUP: M7 VertiDrive with 2 #8 UltraTuff nozzles, using 8 ton bulk pot with GMA PremiumBlast at 92 psi

RESULTS: 290 ft²/hr (27 m²/hr) and NACE 3 finish with 3 mil profile



CASE STUDIES

COATINGS REMOVED: 15-30 MILS



PROJECT: Ship Hull
COATING REMOVED: 30 mils silicone
CUSTOMER: NKOM
LOCATION: Doha, Qatar
DATE: April 22, 2022
SETUP: M7 VertiDrive with 2 #8 SnakeBite nozzles, using coal slag at 90psi

RESULTS: 200 ft²/hr (18.5 m²/hr)

PREVIOUS RESULTS BEFORE VERTIDRIVE: 70 ft²/hr (6.5 m²/hr) manual blasting. Two blasters = 140/hr (13 m²/hr)

COMMENTS: Had big compressors, but had constricting 2.0" bull hoses and pusher lines resulting in the low pressure. Customer purchased 2 VertiDrives.



PROJECT: Water Tank
COATING REMOVED: Epoxy 15-25 mils
CUSTOMER: Capital Coatings
LOCATION: Escondido, CA, USA
DATE: April 24, 2023
SETUP: 2 M7 VertiDrives each with 2 #7 nozzles, using GMA GX2 Garnet

RESULTS: 240 ft²/hr (22.3 m²/hr)



COATINGS REMOVED: 39+ MILS



PROJECT: 100ft Diameter Tank Internal
COATING REMOVED: 500-1000 mils [$\frac{1}{2}$ to 1 inch] of rubber coating
CUSTOMER: BHP
LOCATION: Olympic Dam, Australia
DATE: June 5, 2020
SETUP: 2 x 300hp Ultra High Pressure pumps coupled to 2 x VertiDrive M7 with 6 inch spinning cutting heads

RESULTS: 150 ft²/hr (14 m²/hr) and minimizing any men on man lifts inside the small tank

PREVIOUS RESULTS BEFORE VERTIDRIVE:
 100 ft²/hr (9.2 m²/hr) - 2 blasters on man lifts

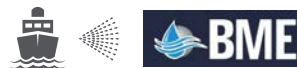


PROJECT: Glen Sannox Ferry Boat
COATING REMOVED: 39 mils four-layer Jotun Epoxy
CUSTOMER: BME Services
LOCATION: Aberdeen, Scotland, UK
DATE: 2020
SETUP: VertiDrive M7 UHP, 36,250 psi pump @ 6.8 gal/minute flow (2500 bar @ 26 lpm), 4 total workers

RESULTS: Completed in 8 days. Average of 1345.5 ft²/day (125 m²/day). 500% faster!

PREVIOUS RESULTS BEFORE VERTIDRIVE:
 269 ft²/day (25 m²/day)

COMMENTS: Glen Sannox ferry boat had dimensions of 1102 ft x 183 ft (102.4 x 17 m) and a total area of 21,527.8 ft² (2,000 m²)



COATINGS REMOVED: 12-15 MILS



PROJECT: Water tank

COATING REMOVED: 15 mils epoxy

CUSTOMER: Graham Industrial Coatings

LOCATION: Eielson Air Force Base - Fairbanks North Star, AK, USA

DATE: October 25, 2022

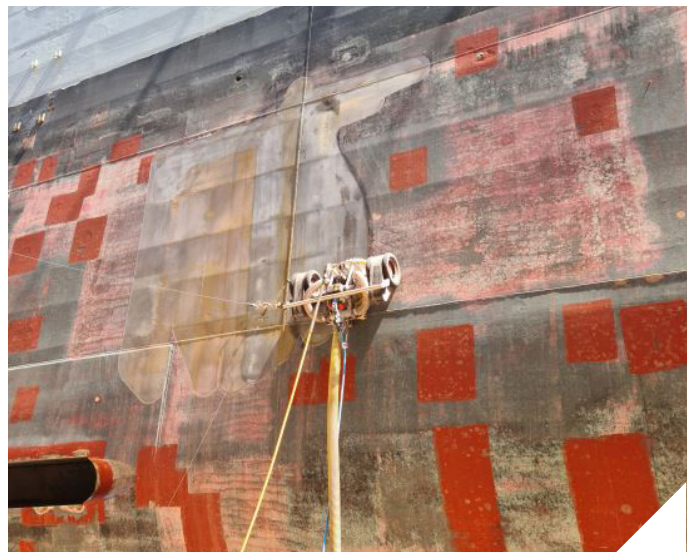
SETUP: VertiDrive M7 with 2 #8 UltraTuff nozzles, using 8 ton bulk pot with Green Diamond Slag

RESULTS: 300 ft²/hr (27.8 m²/hr)

COMMENTS: Under tight timeline and needed quick turn-around. Renting the VertiDrive was the ideal solution.



COATINGS REMOVED: 15-30 MILS



PROJECT: Naval Vessel

COATING REMOVED: 21.5 mils [550 microns] of marine coating

CUSTOMER: Eptec

LOCATION: Garden Island Dockyard, Sydney Australia

DATE: October 8, 2020

SETUP: VertiDrive M4 Ultra High pressure robot with an NLB 300hp 40,000psi @10gpm pump

RESULTS: 280 ft²/hr (26 m²/hr) leaving a dry WJ1 surface free of contaminants and ready for painting

PREVIOUS RESULTS BEFORE VERTIDRIVE: 100 ft²/hr (9.2 m²/hr) per manual lance, doing the work of nearly 3 manual lances



COATINGS REMOVED: 39+ MILS



PROJECT: Storage Tank Inner Walls
COATING REMOVED: Heavy rust
CUSTOMER: Buchen International
LOCATION: Antwerp, BE, USA
DATE: June 1, 2023
SETUP: VertiDrive V400 UHP Vacuum Blasting

RESULTS: Average of 484 ft²/hr (45 m²/hr)
 @ 2800 bar (40,610psi) 12 gal/min (46 lpm)

PREVIOUS RESULTS BEFORE VERTIDRIVE:
 64 ft²/hr (6 m²/hr)

COMMENTS: 750% increase! Project completed 4 days ahead of schedule.



PRESSURE WASHING



PROJECT: 6 (19ft diameter x 1640ft long) Penstocks
COATING REMOVED: Pressure Washed Only
CUSTOMER: Snowy Hydro
LOCATION: New South Wales, Australia
DATE: June 5, 2020
SETUP: 2 x VertiDrive M7 with pressure washing arms.

RESULTS: 10,764 ft² (1,000 m²) per day.

PREVIOUS RESULTS BEFORE VERTIDRIVE:
 4-5 personnel working by hand to match productivity.

COMMENTS: As the tops of the pipes were about 20 feet off the ground covered in slippery organic growth, the VertiDrive eliminated this hazardous condition while also out-performing human blasters.



AVAILABLE PACKAGES - HOW TO ORDER



V700 ABRASIVE BLASTING ROBOT



All packages include the following: VertiDrive V700 robot, (2) 50' umbilical power cables, abrasive blasting arm, fall-arrest pulley, spare parts package, data range-extension kit, (3) Snakebite nozzles, and training package.

	WITH BASIC STAND	WITH TRANSPORT SKID	WITH TRANSPORT SKID & WINCH SYSTEM
STANDARD CONTROLS	RUBVDV710A1	RUBVDV710A2	RUBVDV710A3
HIGH TEMP CONFIGURATION WITH ACTIVE COOLED CONTROLS*	RUBVDV711A1	RUBVDV711A2	RUBVDV711A3

*Recommended for usage applications over 95°F

V700 PRESSURE WASHING ROBOT



All packages include the following: VertiDrive V700 robot, (2) 50' umbilical power cables, fall-arrest pulley, spare parts package, data range-extension kit, and training package.

		WITH BASIC STAND	WITH TRANSPORT SKID	WITH TRANSPORT SKID & WINCH SYSTEM
STANDARD CONTROLS CONFIGURATIONS	500 BAR, SINGLE NOZZLE	RUBVDV710C1	RUBVDV710C2	RUBVDV710C3
	500 BAR, TRIPLE NOZZLE	RUBVDV710D1	RUBVDV710D2	RUBVDV710D3
	1000 BAR, SINGLE NOZZLE	RUBVDV710E1	RUBVDV710E2	RUBVDV710E3
	1000 BAR, TRIPLE NOZZLE	RUBVDV710F1	RUBVDV710F2	RUBVDV710F3
HIGH TEMP CONFIGURATION WITH ACTIVE COOLED CONTROLS*	500 BAR, SINGLE NOZZLE	RUBVDV711C1	RUBVDV711C2	RUBVDV711C3
	500 BAR, TRIPLE NOZZLE	RUBVDV711D1	RUBVDV711D2	RUBVDV711D3
	1000 BAR, SINGLE NOZZLE	RUBVDV711E1	RUBVDV711E2	RUBVDV711E3
	1000 BAR, TRIPLE NOZZLE	RUBVDV711F1	RUBVDV711F2	RUBVDV711F3

*Recommended for usage applications over 95°F

V700 UHP CLEANING ROBOT



All packages include the following: VertiDrive V700 robot, (2) 50' umbilical power cables, UHP swing arm, fall-arrest pulley, spare parts package, (2) swivel spares kits, data range-extension kit, nozzle package w/16 nozzles & 2 plugs, and training package.

	WITH BASIC STAND	WITH TRANSPORT SKID	WITH TRANSPORT SKID & WINCH SYSTEM
STANDARD CONTROLS	RUBVDV710B1	RUBVDV710B2	RUBVDV710B3
HIGH TEMP CONFIGURATION WITH ACTIVE COOLED CONTROLS*	RUBVDV711B1	RUBVDV711B2	RUBVDV711B3

*Recommended for usage applications over 95°F

V400 UHP CLOSED CIRCUIT ROBOT



All packages include the following: VertiDrive V400 closed-loop robot, (2) 50' umbilical power cables, fall-arrest pulley, spare parts package, data range-extension kit, swivel UHP nozzle cross, UHP cross TetraCORE package, swivel overhaul kit for UHP cross, and training package.

	WITH BASIC STAND	WITH TRANSPORT SKID	WITH TRANSPORT SKID & WINCH SYSTEM
STANDARD CONTROLS	RUBVDV4201	RUBVDV4202	RUBVDV4203
HIGH TEMP CONFIGURATION WITH ACTIVE COOLED CONTROLS*	RUBVDV4211	RUBVDV4212	RUBVDV4213

*Recommended for usage applications over 95°F

PACKAGE OPTIONS



Basic Stand



Transport Skid



Transport Skid & Winch System

PARTS

BREAK-DOWN

ABRASIVE BLASTING SWING ARM

PART NUMBER	DESCRIPTION
RUBVDV7APWARM	V700 Abrasive Blasting Arm with Clamps and controls for 3 nozzles
RUBVD322067	Replacement Nozzle Clamps for abrasive blast arm (Set of 3)
RUBVD322070	Replacement hose Clamps for abrasive blast arm (Set of 3)
RUBVD7BARK	Rebuild Kit for V700A Abrasive Blasting Arm, Inc all parts except Arm



UHP HYDROBLASTING ARM

PART NUMBER	DESCRIPTION
RUBVDV7BPWARM	V700B Pressure Washing Arm Complete with Spinning Bar and Hose
RUBVD110830	UHP Swivel for V700B Arm
RUBVD213359	3000bar UHP Whip hose for V700 arm
RUBVDV7UCCA	UHP Coupling and Clamp Assembly (inc whipcheck)
RUBVD999004	Anti-Seize lubricant
RUBVD322036	V700 UHP Nozzle Bar Assembly
RUBVDV7UARK	Rebuild Kit for V700B UHP Arm, Inc all parts except arm and nozzles



Requires BlastJet Diamond Waterjet Nozzles

HP WASHING ARM 3X 500 BAR

PART NUMBER	DESCRIPTION
RUBVDV7CPWARM	V700C Pressure Washing Arm with 3 lances
RUBVDV7CARPWH	V700C Arm W-Manifold with 1100 bar 70cm Pressure Wash hoses
RUBVD223035	V700C Arm Pressure Washing Lance Assembly
RUBVD322038	V700C Arm Clamp for Pressure Washing Lance
RUBVD122012	V700C VertiWash F4 3/8" BSP Nozzle
RUBVD7CPWARK	Rebuild Kit for V700B Pressure Washing Arm, Inc all parts except arm and nozzles



Requires BlastJet Diamond Waterjet Nozzles

CONTROL BOX

PART NUMBER	DESCRIPTION
RUBVDCBSMA	Control Box with Frame
RUBVDRB	Replacement Breaker
RUBVDRS	Replacement Switch
RUBVDRA	Replacement Antenna



DEADMAN CONTROLS

PART NUMBER	DESCRIPTION
RUBVDDC	Deadman controls
RUBVDRBATTERY	Replacement Battery



PARTS

BREAK-DOWN

UMBILICAL CORD

PART NUMBER	DESCRIPTION
RUBVDCBCUC	100ft (30m) Control Box to Cabinet Umbilical Cord
RUBVDEUC	100ft (30m) Extension Umbilical Cord
RUBVDWH	Whipcheck for protection umbilical cord when using extension



PNEUMATIC VACUUM SYSTEM

PART NUMBER	DESCRIPTION
RUBVDV4VSP	Pneumatic Vacuum System for use with V400
RUBVDDCCR	Dust Collector Cartridge replacement



STORAGE OPTIONS

VERTIDRIVE CONTAINER

PART NUMBER	DESCRIPTION
RUBVDCB	VertiDrive container build for Portable Jobsites includes cabinets, generator and shelving system
RUBVDBEK	Spare Parts Kit for Blasting equipment
RUBVDV7RK	Spare Parts Kit for V700 Robot
RUBVDV4RK	Spare Parts Kit for V400 Robot



VERTIDRIVE TRAILER

PART NUMBER	DESCRIPTION
RUBVDT	10ft trailer setup with generator and tools



VERTIDRIVE CART

PART NUMBER	DESCRIPTION
RUBVDCBSMA	VertiDrive cart to store VertiDrive and mount control box
RUBVDFE	VertiDrive Transport Mount Frame with Winch



RELATED PRODUCTS



SnakeBite Blast Nozzles

The world's quietest blast nozzle!

- ▶ Up to 16dBA noise reduction
- ▶ Up to 45% less robot fatigue compared to standard blast nozzles
- ▶ Durable and lightweight

PART NUMBER	DESCRIPTION	BEST SCENARIOS
BNSBXQ6-1	#6 SnakeBite XQ Nozzle	Best when you need a higher productivity quiet nozzle but don't have the air to use a Strike
BNSBXQ7-1	#7 SnakeBite XQ Nozzle	
BNSBXQ8-1	#8 SnakeBite XQ Nozzle	
BNSBXQ10-1	#10 SnakeBite Strike Nozzle	Best for blasting acres of steel



BlastJet Diamond Waterjet Nozzles

- ▶ Call for sizing

PART NUMBER	DESCRIPTION
RUBUJTCXXX	Waterjet Nozzles



UNFITTED BLAST HOSE – WHIP SUPAFLEX 2-PLY

- ▶ Superior quality, lightweight and highly flexible sandblasting hose
- ▶ Anti-static, natural rubber liner
- ▶ Rated to minimum 175 psi – 3:1 safety factor

PART NUMBER	EXTERNAL OD	INTERNAL ID	SUITS HOSES
BHS40100	2-5/32"	1-1/2"	100 ft
BHS4050	2-5/32"	1-1/2"	50 ft
BH5050	2-7/8"	2"	50ft

PART NUMBER	DESCRIPTION
RUBVD7BHS4010F	10ft Whip Hose section for V700



LED BLAST LIGHT

- ▶ 6 LED's giving 1,325 lumens light output blast light
- ▶ Voltage range – 120 v AC or 12-28 v AC/DC
- ▶ Long lasting – the LED blast light lamps will last 20x the life of a halogen globe
- ▶ Swing arm mounted

PART NUMBER	DESCRIPTION
RUBBVD7L	LED Blast Light with Swing Arm Clamp, connected to robot



AUSTRALIA

Adelaide | Darwin | Brisbane | Mackay |
Sydney | Newcastle | Melbourne |
Perth | Port Hedland

1800 190 190
sales.au@blastone.com

NEW ZEALAND

Auckland | Christchurch
0800 190 190
sales.nz@blastone.com

MALAYSIA

Kuala Lumpur
03 7725 0371
sales.my@blastone.com

NORTH AMERICA

Columbus | Los Angeles | Chicago |
Minneapolis | Hampton Roads |
Jacksonville | Houston

1 800 999 1881
sales@blastone.com